

## Zambia Cable Tray Seismic Support Factory Site



## Zambia Cable Tray Seismic Support Factory Site



As with cable restraints, floor- or roof-mounted electrical distribution support systems will normally involve a box frame that supports the system (single or multiple runs) with some kind of a trapeze bar.



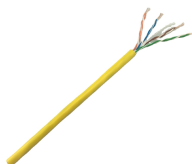
Guidelines are presented here for conducting in-plant seismic ruggedness review of conduit, cable trays, and their support systems. The in-plant review has two purposes.



The assembly connects the structure such as a beam or ceiling, to a brace member which could be cable, channel, or pipe to a non-structural support, such as pipe, trapeze, cable tray, duct, and more.



The Unit maintains a bibliographic database, on all the Geology of Zambia and is responsible for vending of Geological information resources such as reports and maps.



This article will explore the importance of seismic resistance in cable trays, discuss when seismic braces are necessary, and help you understand how to make informed decisions for your ...



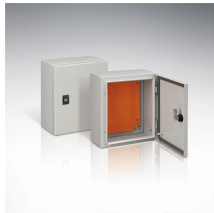
Although all of cable trays addressed by this paper are typical cable trays suspended on the ceiling, their length of sub beams and hanging rods as well as span of hanging rods may differ.



This appendix provides the design criteria for seismic Category I cable trays and their supports. Seismic Category II cable trays and their supports are also designed utilizing the design criteria of this appendix.



Learn how I approach Cable Trays Seismic Design to protect power and data in earthquake-prone areas. Understand key principles, methods, and ...



It offers helpful video tutorials for our products, such as choosing the right material, the different types of, and working with cable tray, mesh and ladder, general strut use, and managing pipework with ...



Request PDF | On Sep 1, 2023, Chen Wu and others published Seismic fragility analysis of suspended cable trays in civil buildings | Find, read and cite all the research you need on...



Design and construction practices in Zambia have tended to neglect the risk posed by seismicity on structures, and no earthquake design and construction guides exist. The recent earthquake ...



In this study the seismic fragility of cable tray in civil buildings is investigated by numerical analysis combined with full-scale shaking table tests. The previous study on the cable trays in civil ...



Wireforce Zambia: The leading manufacturer of high-quality wire products, delivering durable and reliable solutions for all your fencing, construction, and industrial needs.



When fitting cable trays and their accessories, the products are cut on site to create changes of direction, adjust sections, etc. Damage can also occur during handling; as a result, both the ...

## Contact Us

For more information, pricing, or custom network solutions, please contact us:

Website: <https://www.hashherbcafe.co.za>

Email: [hello@hashherbcafe.co.za](mailto:hello@hashherbcafe.co.za)

Phone: +27 63 814 7295

Address: 15 Galaxy Road, Linbro Business Park, Johannesburg, 2065, South Africa

This document is for informational purposes only. Specifications subject to change without notice.

