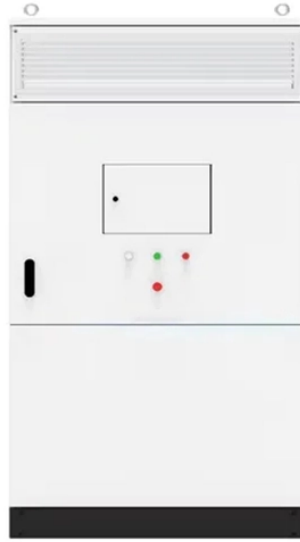


Yellow-green cable tray crossover line



Yellow-green cable tray crossover line



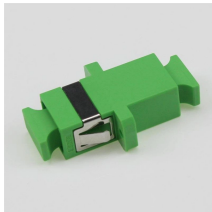
They are extensively deployed in manufacturing facilities, especially in process industries: petrochemical, steel, pulp and paper, cement and mining. These flexible, space-efficient cables can ...



Our wind certification report provides you with list of acceptable B-Line series cable tray supports, fittings and covers based off of the environmental conditions, cable loading, and type of cable tray in your ...



This 6 AWG THHN building wire can be used in conduit and cable trays for services, feeders, and branch circuits in commercial or industrial applications. 6 AWG - Green/yellow - Stranded Conductor



With an innovative dove tail splice design, Eaton's B-Line series KwikSplice cable channel is designed to reduce complexity, improve versatility and speed installs.



It belongs to linergy earth terminal block with 35 mm² nominal cross section. It has green-yellow surface treatment. Mounting by clip-on and sideways connection by single-level 1x1 screw terminals. It could ...



Southwire's THHN and THWN is a multi-purpose building wire used in conduit and cable trays for service, feeders and branch circuits in commercial and industrial applications.



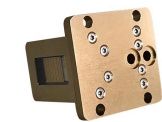
Available in a range of insulation and jacketing types, our tray cables are suited for wet, dry, and hazardous environments, compliant with NEC Class 1 Division 2 standards for industrial areas.



Choose from our selection of green/yellow cable in a wide range of styles and sizes. Same and Next Day Delivery.



Shop DigiKey's large in-stock selection of Single Conductor Cables (Hook-Up Wire). View inventory, pricing and order now for same day shipping!



We offer a range of cable crossovers and tees, available in both equal and unequal measures, for light, medium, and heavy duty cable tray systems in widths of 50mm - 900mm.

Contact Us

For more information, pricing, or custom network solutions, please contact us:

Website: <https://www.hashherbcafe.co.za>

Email: hello@hashherbcafe.co.za

Phone: +27 63 814 7295

Address: 15 Galaxy Road, Linbro Business Park, Johannesburg, 2065, South Africa

This document is for informational purposes only. Specifications subject to change without notice.

