

Working Principle of Cable Tray Expansion Joints



Working Principle of Cable Tray Expansion Joints



Learn how to manage thermal expansion and contraction in cable tray systems with expert tips on expansion joints, guides, and spacing to ensure long-term structural integrity.



Working refers to the physical or mental effort exerted by an individual in order to perform tasks or carry out responsibilities in exchange for compensation or towards the achievement of a specific goal.



Define working. working synonyms, working pronunciation, working translation, English dictionary definition of working. adj. 1. a. Performing work: a working committee. b. Operating or functioning as ...



1) Cable trays need expansion joints to allow for thermal contraction and expansion due to temperature changes. The NEC requires expansion joints where necessary, while NEMA standards provide ...



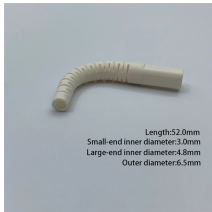
working adjective [not gradable] (PERFORMING AS INTENDED) performing as intended and doing what it is supposed to do:



Reasonable setting of cable tray expansion joints is a key link to ensure the safe operation of the cable tray system, and factors such as thermal expansion compensation, vibration absorption and ...



In outdoor environments or areas with significant temperature swings (e.g., desert, cold storage adjacent zones), thermal expansion and contraction become critical design considerations.



Special fittings accommodate the difference in expansion between conductors and the cable bus housing. Proper design and placement of expansion joints and fittings can minimize stresses and ...



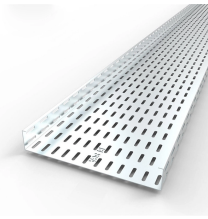
Noun working (countable and uncountable, plural workings) (usually in the plural) Operation; action. Method of operation. (arithmetic) The incidental or subsidiary calculations ...



Cable tray length is selected based on the load to be supported, the distance between the supports (also referred to as the span), and handling and installation constraints.



The cable tray needs to be anchored at the support closest to the midpoint between the expansion joints with hold down clamps and secured by expansion guides at all other support locations. The ...



All materials expand and contract due to temperature changes. It is important that cable tray installations incorporate features which provide adequate compensation for their thermal contraction and expansion.



A working title or definition is one which you use when starting to make or do something, but which you are likely to change or improve. His working title for the script was "Trust the People".



It is important that cable tray installations incorporate features which provide adequate compensation for their thermal contraction and expansion.



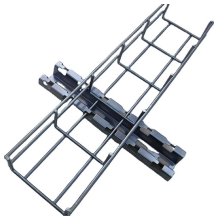
Discover best practices for cable tray expansion joint installation to accommodate thermal changes, ensuring structural integrity and compliance with NEC and NEMA standards.



adjective adequate for practical use; especially sufficient in strength or numbers to accomplish something “the party has a working majority in the House” “a working knowledge of Spanish” ...



Definition of working adjective in Oxford Advanced Learner's Dictionary. Meaning, pronunciation, picture, example sentences, grammar, usage notes, synonyms and more.



The meaning of WORKING is the manner of functioning or operating : operation —usually used in plural. How to use working in a sentence.



WORKING definition: the act of a person or thing that works. See examples of working used in a sentence.



concerned with, used in, or suitable for work: working clothes (of a meal or occasion) during which business discussions are carried on: working lunch, working breakfast

Contact Us

For more information, pricing, or custom network solutions, please contact us:

Website: <https://www.hashherbcafe.co.za>

Email: hello@hashherbcafe.co.za

Phone: +27 63 814 7295

Address: 15 Galaxy Road, Linbro Business Park, Johannesburg, 2065, South Africa

This document is for informational purposes only. Specifications subject to change without notice.

