

## Wiring of Explosion-proof Lighting and Power Distribution Box



## Wiring of Explosion-proof Lighting and Power Distribution Box



Provide boxes in wiring or raceway systems wherever required for pulling of wires, making connections, and mounting of devices or fixtures. Boxes for metallic raceways must be stainless steel type 304, ...



Learn two common explosion-proof lighting wiring methods for hazardous areas: cable wiring and steel conduit installation. Includes diagrams and practical applications for industrial ...



Consequences: the wiring in the lighting explosion-proof distribution box (board) is messy, and the second board in the box presses against the pipe opening, which affects the entry of wires into the box.



This article will detail the design and installation requirements for the electrical circuits of LED explosion-proof light fittings, helping users understand how to install and maintain explosion-proof light fittings ...



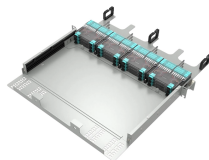
Any suitable type of wire or cable if installed in threaded rigid metal conduit (Type RMC) or threaded steel intermediate metal conduit (Type IMC), with approved termination fittings (end seals).



Equipped with specialized hinge structure, which can prevent the flameproof joints from damage when opening and closing the panels, and greatly prolong the service life of box. The boxes can be ...



Proper installation, wiring, and usage are critical to ensuring the safety and functionality of these systems. Below, we will discuss the correct wiring methods ...



Explosion-proof distribution boxes, vital terminal distribution equipment in power systems, play a crucial role in controlling and protecting industrial electricity in hazardous environments.



Learn the essential steps and best practices for properly installing explosion-proof lighting fixtures to ensure safety and compliance in hazardous environments.



Proper installation, wiring, and usage are critical to ensuring the safety and functionality of these systems. Below, we will discuss the correct wiring methods for an explosion-proof...



A box shall be used wherever a change is made to a raceway system or a cable system which is metal clad or metal sheathed.

## Contact Us

For more information, pricing, or custom network solutions, please contact us:

Website: <https://www.hashherbcafe.co.za>

Email: [hello@hashherbcafe.co.za](mailto:hello@hashherbcafe.co.za)

Phone: +27 63 814 7295

Address: 15 Galaxy Road, Linbro Business Park, Johannesburg, 2065, South Africa

This document is for informational purposes only. Specifications subject to change without notice.

