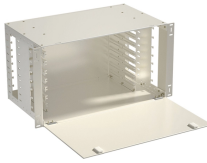


## Wiring of 3p distribution box



## Wiring of 3p distribution box



Below is three phase distribution board wiring diagram shown. The wiring connection is started from the main 600 A MCCB circuit breaker. The main 3 phase four wire supply enters the ...



Learn about the wiring process for a 3 phase distribution board (DB) box, including the necessary steps and safety precautions. Understand how to connect the incoming power supply, distribute it to ...



Learn about 3 phase breaker panel wiring, including the basics of three-phase electrical systems, how to wire a 3 phase breaker panel, and common considerations and safety measures for installation.



Learn how to properly wire a 3 phase breaker panel for safe and efficient electrical distribution in your building.



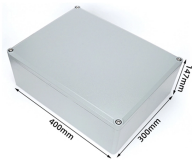
Correct wiring methods for circuit breakers within distribution boxes are fundamental to ensuring electrical safety and compliance with established codes. ...



The three phase distribution board wiring diagram shows how the current flows between the various components in the three phase distribution board. It also includes details of the ratings of ...



Clear and practical overview of 3 phase wiring diagrams, including key components, connection methods, and standard configurations for residential and industrial setups.



Find out how to properly wire an electrical panel box with a comprehensive diagram and step-by-step instructions.



Learn how to wire a 3-wire sub panel with this clear and detailed diagram. Step-by-step instructions for safe and reliable electrical installation.



Wiring a 3-pole GFCI breaker is similar to wiring a standard 3-pole breaker, except for the white (built-in pigtail) wire. This pigtail must be connected to the neutral busbar in the main service panel.



Correct wiring methods for circuit breakers within distribution boxes are fundamental to ensuring electrical safety and compliance with established codes. The distinction between 1P and 2P ...

## Contact Us

For more information, pricing, or custom network solutions, please contact us:

Website: <https://www.hashherbcafe.co.za>

Email: [hello@hashherbcafe.co.za](mailto:hello@hashherbcafe.co.za)

Phone: +27 63 814 7295

Address: 15 Galaxy Road, Linbro Business Park, Johannesburg, 2065, South Africa

This document is for informational purposes only. Specifications subject to change without notice.

