

Wiring method for EU explosion-proof distribution boxes



Overview

Wiring all fasteners are used galvanized parts, the secondary wiring needs to use black wire, and add casing sequencing; box of measuring instruments in the conductor should be well enameled tin; layered distribution box wiring should be considered trunking in and out. Below, we will discuss the correct wiring methods for an explosion-proof distribution box and highlight key usage precautions. Wiring an Explosion-Proof Distribution Box When installing and wiring an explosion-proof distribution box, it is essential to follow strict safety protocols and national. Explosion-proof distribution boxes, vital terminal distribution equipment in power systems, play a crucial role in controlling and protecting industrial electricity in hazardous environments. Getting this right demands more than following a checklist. It requires understanding how classification. The design and installation of explosion-protected distribution and control boards having flameproof enclosures require considerable experience and careful consideration of relevant regulations in relation to the application data. Only thus are technically and economically satisfactory solutions. Enclosure for modular combination (Ex e).

Wiring method for EU explosion-proof distribution boxes



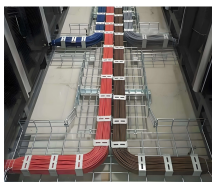
Select a mounting location that will provide suitable strength and rigidity for supporting all contained wiring and control devices. Figure 1 shows the mounting dimensions.



Understanding explosion proof wiring box solutions is essential for industries that prioritize safety and reliability. This guide will explore the latest developments and related industries focused ...



A list of standards is available from European Commission Enterprise and Industry - Harmonised ATEX standards. Products complying with any of these standards carry the presumption of conformity...



Before selecting a single cable gland or junction box, the classification of the hazardous area must be established. This step shapes every subsequent decision about explosion proof wiring, ...



All accessible structures and enclosures made of conductive materials must be connected to an equipotential bus. The purpose of this is to equalise electrical potentials, thus preventing electrostatic ...



- Main switch and branch switch are operated with external rotary actuator.
- Internal wiring to the terminal is finished.
- International brand of explosion-proof terminal blocks. Entries plugged.

Cable ...



Proper installation, wiring, and usage are critical to ensuring the safety and functionality of these systems. Below, we will discuss the correct wiring methods for an explosion-proof...

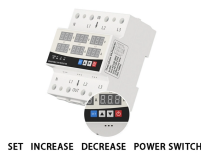


Please bear in mind that batteries, battery racks, live electrical systems, and ATEX enclosures may be under high voltage – contact with high-voltage components poses an acute risk of death and explosion!

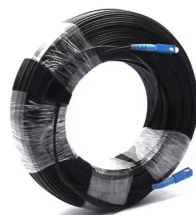


Switch terminals should be matched with the wire cross-section; wiring after component installation should be neatly arranged and tied into a bundle with nylon tape to be fastened behind the board.

DATA ADJUSTABLE, EASY TO USE



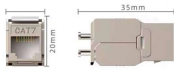
All circuit wiring is run in conduit and junction boxes approved for explosion-proof installation. Explosion proof transducers and wiring must be installed according to ANSI/UL 1203-1994, Explosion-Proof ...



Compliance with the relevant regulations and the arrangement of components in explosion-protected enclosures require specialist knowledge. We design systems to suit your requirements on the basis ...



Standardised distribution boxes for explosion-protected areas The M12 EX Distribution Boxes are already equipped with Ex approvals. There is no need for individual approval, which simplifies ...



Proper installation, wiring, and usage are critical to ensuring the safety and functionality of these systems. Below, we will discuss the correct wiring methods ...



Generally, professional electricians should handle the wiring of explosion-proof distribution boxes, as they possess the necessary skills and safety equipment. In non-urgent cases, ...

Contact Us

For more information, pricing, or custom network solutions, please contact us:

Website: <https://www.hashherbcafe.co.za>

Email: hello@hashherbcafe.co.za

Phone: +27 63 814 7295

Address: 15 Galaxy Road, Linbro Business Park, Johannesburg, 2065, South Africa

This document is for informational purposes only. Specifications subject to change without notice.

