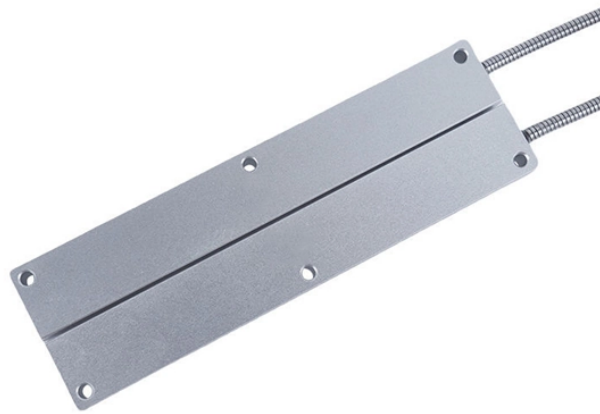


# **Wiring Process of Power Supply Cabinet**



## Wiring Process of Power Supply Cabinet



It is helpful for every DIY-minded homeowner to have at least a basic understanding of electrical work. This article will attempt to reveal some of the mystery surrounding the maze of wiring ...



Learn how to build a PLC cabinet with expert tips on wiring, safety standards, component selection, and testing. Ensure efficiency & compliance with Linkewell's solutions.



Wiring according to the drawings can be said to be the highest criterion for PLC control cabinet wiring. Before wiring, you must read the drawings carefully and fully understand the designer's intentions.



Read our guide to electrical wiring, covering layout, materials, safety, and planning for a safe, efficient home system.



It includes diagrams for 1000V and 230V power distribution, main circuit breaker operation, contactor operation, 24V and 230V signals, and an optional arc monitor.



Get safe, reliable electrical wiring and rewiring services in Des Moines from our licensed and experienced electricians. We handle upgrades, repairs, and new installations for homes and ...



One end of the cable is connected with the total positive and total negative copper bar inside the DC cabinet, and the other end of the cable is connected with the battery end of HPS or PCS inverter.



To guard against coupling noise from one conductor to another, follow these general guidelines (Table B) when routing wires and cables (both inside and outside of an enclosure). Use the spacing given in ...



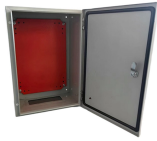
In this article, you will learn the wiring in a PLC control panel and the basic electrical design of a PLC system cabinet.



Before switching on the power, check that the auxiliary transformers and main circuit connections are carried out according to the drawings, that all miniature circuit breakers (MCB) and switches are ...



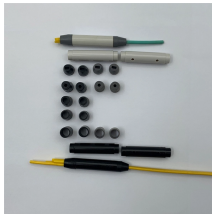
The Complete Guide to Electrical Wiring (Current with 2014-2017 Electrical Codes) by Black+Decker



Learn the basics of electrical wiring for the home, including wire and cable types, wire color codes and labeling, and essential wiring techniques.



When it comes to Electrical Connectors & Wiring Devices, you can count on Grainger. Supplies and solutions for every industry, plus easy ordering, fast delivery and 24/7 customer support.



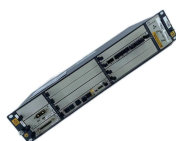
Electrical wiring is an electrical installation of cabling and associated devices such as switches, distribution boards, sockets, and light fittings in a structure. Wiring is subject to safety standards for ...



Proper transport, storage, installation, assembly, commissioning, operation and maintenance are required to ensure that the products operate safely and without any problems. The permissible ...



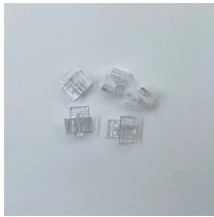
Whether you want to understand how your home's wiring works, add a new light switch, or replace an outlet, learning the basics of electrical wiring is essential for every homeowner. This article covers all ...



This page contains wiring diagrams for household light switches and includes: a switch loop, single-pole switches, light dimmer, and a few choices for wiring an outlet/switch combo device.



Conquer your fear of working with electrical wiring BY understanding the basics of electrical work and installing 3-switch wiring. Play it smart and stay safe when attempting DIY electrical projects. Here's ...



In the cabinet the AC power would enter at the terminal block, and be connected to the main breaker. It would then be connected to the contactors and overload relays that constitute the ...



This guide will walk you through the essential steps to design and wire an efficient PLC control cabinet. We'll cover key topics like selecting components, cabinet layout, cooling, wiring, and ...

## Contact Us

For more information, pricing, or custom network solutions, please contact us:

Website: <https://www.hashherbcafe.co.za>

Email: [hello@hashherbcafe.co.za](mailto:hello@hashherbcafe.co.za)

Phone: +27 63 814 7295

Address: 15 Galaxy Road, Linbro Business Park, Johannesburg, 2065, South Africa

This document is for informational purposes only. Specifications subject to change without notice.

