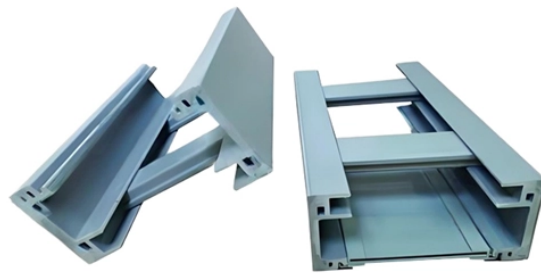


## Which server processors integrate AI



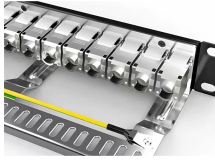
### Overview

In 2025, the backbone of artificial intelligence (AI) servers is formed by a dynamic and competitive array of advanced processors designed to handle the extreme computational demands of large AI models and real-time AI applications. AMD's server CPU market share reached 27.8% in Q3 2025, projected to exceed 40% by year-end and potentially reach 50% in 2026. These processors include high-performance CPUs, GPUs, and. If you're among the horde of companies looking to integrate AI services into your workflows yet unwilling to pay OpenAI, Google, Microsoft, or Anthropic exorbitant API fees for their advanced models, why not host it yourself?

That's exactly the pitch from Dell, who has just launched a new family of. AI model training and inference workloads are forcing the industry to rethink not only how much compute fits in a rack, but how servers are architected from end to end — transforming computing infrastructure as we know it. Explore the IP that enables high-performance, scalable AI systems. Intel launches new Arc Pro GPUs and Gaudi 3 AI accelerators to boost enterprise server infrastructure and scalable AI inferencing. Photo: "Our relationship with the

Taiwan tech ecosystem has been a pillar of our success,” said Intel CEO Lip-Bu Tan. At Computex 2025, Intel announced a significant. Modern AI models are data-hungry, computation-heavy beasts that need specialized hardware just to function, let alone perform at their best.

## Which server processors integrate AI



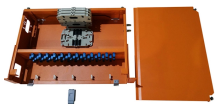
In 2025, the backbone of artificial intelligence (AI) servers is formed by a dynamic and competitive array of advanced processors designed to handle the extreme computational demands ...



GPUs dominate AI training and inference compute, but CPUs remain essential for orchestration, data preprocessing, serving inference requests, and managing the control plane. The ...



Explore key considerations for AI servers and how to design them to support AI workloads optimally.



Over the next several years proliferation of custom CPUs based on the Arm ISA inside AI servers will increase to 90%, leaving x86 and Arm around 10%, according to Counterpoint Research. ...



At Computex 2025, Intel announced a significant expansion of its enterprise-focused hardware portfolio, introducing a new generation of GPUs and AI accelerators tailored to address the ...



NVIDIA CPU platforms provide the foundation for modern AI infrastructure and AI factories. As the host for accelerated computing, orchestrate the data movement, analytics, storage, and system execution ...



Learn how AI workloads are reshaping server architecture with accelerators, CXL memory pooling, high-speed interconnects, and advanced cooling.



Explore top AI servers with NVIDIA H100 and A100 GPUs. Dell, HPE, Lenovo, and Supermicro systems built for HPC, deep learning, and enterprise AI.



AI server architecture combines specialized processors, high-speed connections, and intelligent design to handle AI's computing demands.



That's exactly the pitch from Dell, who has just launched a new family of server products offering extremely high-performance AI solutions specifically targeted at improving AI adoption. The...

## Contact Us

For more information, pricing, or custom network solutions, please contact us:

Website: <https://www.hashherbcafe.co.za>

Email: [hello@hashherbcafe.co.za](mailto:hello@hashherbcafe.co.za)

Phone: +27 63 814 7295

Address: 15 Galaxy Road, Linbro Business Park, Johannesburg, 2065, South Africa

This document is for informational purposes only. Specifications subject to change without notice.

