

Which network cable is located under the distribution box



Overview

A distribution box serves as a central point for managing and distributing fiber optic cables. This device ensures reliable and efficient connectivity between various network components. The distribution box provides a secure environment for splicing, terminating, and organizing. It is a wall mounted or free standing rack for cable or wiring from the Main distribution frame and also called as combined distribution frame which leads to individual cables for every piece of equipments such as personal computers, workstations and all other end user devices. Understanding its function is key to troubleshooting connectivity issues and knowing the. A distribution frame is a physical part of the network that acts as a passive cable termination. Distribution frames are the central concentrator for the cabling system, for example, cables that come from. A cable rack that connects and manages wiring used for telecommunication between a service provider and intermediate distribution frames (IDFs). The importance of a distribution box cannot be.

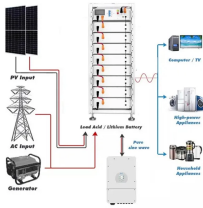
Which network cable is located under the distribution box



What is running through your neighborhood is a thick underground cable containing perhaps 25 or 50 pairs of copper wires. The little green box is a place where the ...



What is running through your neighborhood is a thick underground cable containing perhaps 25 or 50 pairs of copper wires. The little green box is a place where the 50-pair cable pops out of the ground ...



In each household, a cable TV set-top box or a cable modem is connected to the coaxial cable. The set-top box allows the household to access and decode the television signals, while the cable modem ...



A fiber distribution box (FDB) functions as a central hub in fiber optic networks where the main cable is split into multiple individual fibers for distribution to end users.



In each household, a cable TV set-top box or a cable modem is connected to the coaxial cable. The set-top box allows the household to access and decode the ...



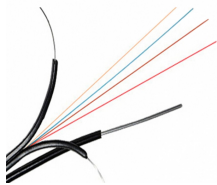
The physical characteristics of the box are determined by the delivery medium, which is typically coaxial cable, copper telephone wire, or fiber-optic cable. The Network Interface Device ...



They function as junction points that manage, protect, terminate, and distribute fiber optic cables, ensuring efficient data transmission between different network elements.



The distribution box provides a centralized location for terminating and connecting fiber optic cables. This setup enhances signal integrity and promotes network scalability.



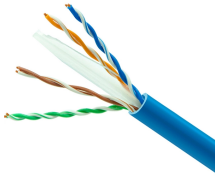
A distribution frame is a physical part of the network that acts as a passive cable termination. This is where cables are punched down and it consists of patch panels and punch-down blocks.



A cable rack that connects and manages wiring used for telecommunication between a service provider and intermediate distribution frames (IDFs). The MDF connects private or public lines coming into a ...



It is the point in the telephone network where maintenance responsibility runs from the telephone providing companies with a subscriber. This is typically located on the box mounted outside of the ...



Minimum specification of Cat6 cables. Run four Cat6 cables (with RJ45 jack points) from the home distribution box to the main entertainment hub and at least two Cat6 cables to all other outlet ...

Contact Us

For more information, pricing, or custom network solutions, please contact us:

Website: <https://www.hashherbcafe.co.za>

Email: hello@hashherbcafe.co.za

Phone: +27 63 814 7295

Address: 15 Galaxy Road, Linbro Business Park, Johannesburg, 2065, South Africa

This document is for informational purposes only. Specifications subject to change without notice.

