

# Which interface should be used for single-mode dual-core fiber optic cable



## Overview

However, we'd recommend using a duplex connector for dual fiber transceiver and simplex connectors for a single fiber (BiDi) transceiver. There are currently not very many pre-made \* simplex \* multi-mode fiber cables available on the market. Dual fiber transceivers use two fibers, giving more speed and stability. They are great for city networks or 5G systems. Choose. Distance: single-mode links can run tens of kilometers; multimode typically covers hundreds of meters to ~2 km depending on optics. Budget & simplicity: you can keep existing copper gear and upgrade the link where you need it most—the. SFP (Small Form-factor Pluggable) is a compact, hot-pluggable network interface module used to connect network devices (switches, routers, firewalls) to fiber optic or copper cables. Think of it as the “translator” for your network equipment, converting electrical signals into optical signals. Dual fiber SFP modules are the commonly used 1G SFP module type. They operate on a bidirectional transmission mechanism and have two distinct channels or ports for transmission and reception of data.

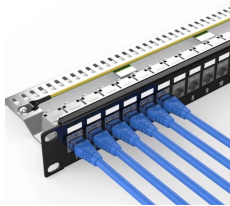
## Which interface should be used for single-mode dual-core fiber opti



Single mode fiber connector permits one light mode to propagate simultaneously, offering the longest transmission distance. The multimode connector allows many light modes to propagate ...



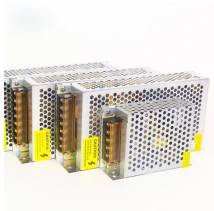
Dual fiber SFP modules are the commonly used 1G SFP module type. They operate on a bidirectional transmission mechanism and have two distinct channels or ports for transmission and reception of data.



Single fiber transceivers often use a simplex LC interface, which simplifies installation and minimizes cabling complexity. These transceivers are ideal for metropolitan area networks or 5G ...



Deploying optical modules requires the right fiber patch cable. It directly affects network connection stability, performance, and maintenance. This article will explain how to pick the right fiber ...



For many campus and metro use cases, a single-mode BiDi pair is extremely attractive because it halves fiber usage, critical where duct space is ...



SFP (Small Form-factor Pluggable) is a compact, hot-pluggable network interface module used to connect network devices (switches, routers, firewalls) to fiber optic or copper cables.



The most commonly used fiber optic connectors are LC and SC connectors due to their reliability, ease of use, and compatibility with both single-mode and multimode fiber optic cables.



If you're working within fiber-constrained environments or building cost-efficient metro access networks, single fiber SFPs provide a smart solution. However, for high-performance, scalable, and ...



Single fiber module also called BiDi transceiver or WDM module. It uses WDM technology to realize the bidirectional transmission of optical signals on one optical fiber.



You can use two simplex fiber-optic patch cables in place of a single duplex cable and vice versa. A single simplex fiber-optic cable provides a single direction of communication when used ...



For many campus and metro use cases, a single-mode BiDi pair is extremely attractive because it halves fiber usage, critical where duct space is tight or existing fiber counts are limited.

## Contact Us

For more information, pricing, or custom network solutions, please contact us:

Website: <https://www.hashherbcafe.co.za>

Email: [hello@hashherbcafe.co.za](mailto:hello@hashherbcafe.co.za)

Phone: +27 63 814 7295

Address: 15 Galaxy Road, Linbro Business Park, Johannesburg, 2065, South Africa

This document is for informational purposes only. Specifications subject to change without notice.

