

Which Paraguayan explosion-proof lighting distribution box is the best



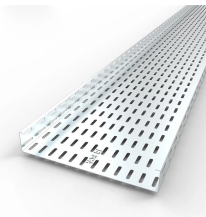
Which Paraguayan explosion-proof lighting distribution box is the b



Find trusted explosion proof power distribution device exporters with ATEX, IECEX, and IP66 certifications. Get custom solutions for hazardous areas. Click to explore verified suppliers and ...



Shenhai: With 25 years of expertise, we lead in manufacturing high-quality explosion-proof lights, junction boxes, and pipe fittings for hazardous environments. Trusted by industry leaders, discover ...



Explore our selection today to find the perfect solution for your electrical distribution needs, and ensure the safety of your workplace. Trust in our expertise and commitment to quality for all your explosion ...



Durable Hexlon Explosion Proof Distribution Boxes and Electrical Enclosures, IECEX and ATEX certified for Zone 1 and Zone 2.



·Equipped with specialized hinge structure, which can prevent the flameproof joints from damage when opening and closing the box, and greatly prolong the service life of box. The boxes can be combined ...



Types of Explosion-Proof Power Distribution Boxes
Explosion-proof power distribution boxes come in various designs and materials tailored to specific environmental challenges and operational ...



Choose the BXM (D)51 for reliable performance in hazardous areas. With the box in place, your site gains a focused safety solution built for demanding distribution tasks. This Explosion-proof ...



Options range from Ex d (flameproof enclosure) to Ex e (increased safety) and Ex i (intrinsically safe) right through to Ex p (pressurized housing), as well as combinations of different explosion-protection ...



Shenhai: With 25 years of expertise, we lead in manufacturing high-quality explosion-proof lights, junction boxes, and pipe fittings for hazardous environments. Trusted ...



Ideal for marine platforms, chemical tankers, LNG vessels, and dangerous cargo wharfs, these robust distribution boxes ensure reliable performance under challenging conditions, including ...



Larson Electronics Releases 9000W Metal Halide Light Tower, 6 Lamps, Remote Ballast Box, 10"-35" - 4/1/2024 Explosion Proof Lighting Portable Hazardous Location Lighting Explosion Proof Network ...

Contact Us

For more information, pricing, or custom network solutions, please contact us:

Website: <https://www.hashherbcafe.co.za>

Email: hello@hashherbcafe.co.za

Phone: +27 63 814 7295

Address: 15 Galaxy Road, Linbro Business Park, Johannesburg, 2065, South Africa

This document is for informational purposes only. Specifications subject to change without notice.

