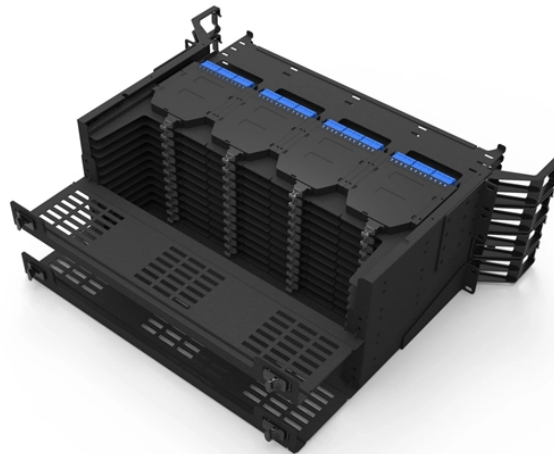


## Where is the optical line terminal



### Overview

In a PON network, a device called an optical line terminal (OLT) is placed at the head end of the network. A single fiber-optic cable runs from the OLT to a nonpowered (passive) optical beam splitter, which multiplies the signal and relays it to many optical network terminals (ONTs). It provides two main functions: to perform conversion between the electrical signals used by the service provider's equipment and the. In the age of fiber-to-the-home (FTTH) and ultra-broadband connectivity, the Optical Line Terminal - or OLT - is one of the most crucial devices powering our high-speed digital world. When you stream a 4K video, join a remote meeting, or play an online game on a gigabit fiber connection, an OLT. Passive optical networking (PON), like active optical networking, uses fiber-optic cabling to provide Ethernet connectivity from a main data source to endpoints.

## Where is the optical line terminal



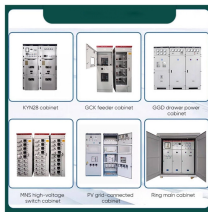
OLTs are either found at the ISP level inside a cabinet or distribution point, or customer level for connecting ONTs locally, such as a hotel or apartments. Depending on the underlying fiber ...



What Is An Optical Network Terminal (ONT) ? ONT stands for Optical Network Terminal. An ONT is a device that translates light signals sent through fiber optic cables into data that your devices can ...



What is an Optical Line Terminal (OLT)? An Optical Line Terminal (OLT) is a high-capacity device that serves as the central hub of a Passive Optical Network (PON).



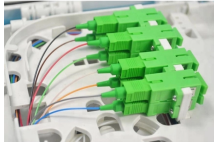
In a PON network, a device called an optical line terminal (OLT) is placed at the head end of the network. A single fiber-optic cable runs from the OLT to a nonpowered (passive) optical beam ...



At the heart of a point-to-multi-point or passive optical network (PON) is the optical line terminal (OLT). Modern OLTs offer communication service providers (CSP) the ability to launch multigigabit services ...



Most broadband operators widely adopt fiber-to-the-home (FTTH) passive optical networks (PONs) by employing a centralized optical line terminal (OLT) situated in a facility referred to as a headend, ...



An Optical Line Terminal (OLT) is a high-capacity fiber-optic network device that acts as the central hub in a Passive Optical Network (PON). It is typically located in an ISP's data center or central office and ...



In a fiber optic network, an optical line terminal is generally found in the service provider's data center and acts as a communication gateway between the service provider and subscribers.



Optical Line Terminal Overview What is an OLT? Definition: An Optical Line Terminal (OLT), also called an Optical Line Termination, is a network device located at the service provider's ...



In modern communication networks, optical line terminal (OLT) is the core device to realize point-to-multipoint (P2MP) in passive optical network (PON) ...

## Contact Us

For more information, pricing, or custom network solutions, please contact us:

Website: <https://www.hashherbcafe.co.za>

Email: [hello@hashherbcafe.co.za](mailto:hello@hashherbcafe.co.za)

Phone: +27 63 814 7295

Address: 15 Galaxy Road, Linbro Business Park, Johannesburg, 2065, South Africa

This document is for informational purposes only. Specifications subject to change without notice.

