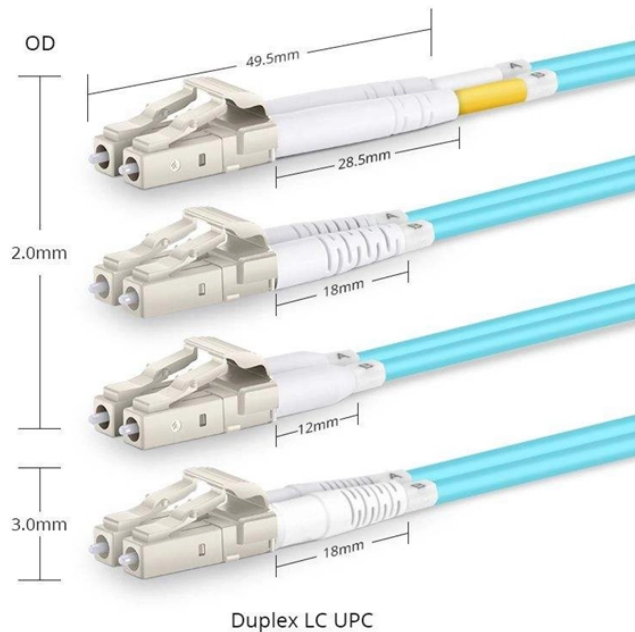


Where is the incoming line terminal in the distribution box



Overview

Live (L) Wire Connection: In a distribution box setup, the incoming live wire (also known as phase or hot wire, denoted as L or Line) connects to the line terminal of the circuit breaker. This serves as the primary source of electrical energy from the mains supply. Inside, you'll find parts like circuit breakers and fuses that protect the system from problems like overloads and short circuits. It ensures that electricity flows. Check electrical parameters: First understand the basic electrical parameters of Distribution box so that you can have a general understanding of the capacity and performance of the distribution box. The concealed laying is mostly through the pipe and. Many outgoing equipment feeder incoming is connected with panel busbar and feeder outgoing is connected to the equipment.

Where is the incoming line terminal in the distribution box



Circuit Breaker Wiring Methods Live (L) Wire Connection: In a distribution box setup, the incoming live wire (also known as phase or hot wire, ...



Analyze the incoming line part: Determine the incoming line source of the distribution box and the configuration of the incoming line circuit breaker, and understand the power supply method ...



Once inside the box, the incoming power is connected to bus bars, which are metal strips that conduct electricity. The bus bars distribute power to each circuit breaker.



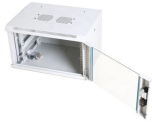
The opening position of incoming and outgoing cables of the distribution cabinet shall be reserved by the supplier according to the size. Close after cable laying.



The terminals are where the wires connect to the distribution box. These points ensure a secure and proper electrical connection, allowing the flow of current to pass safely through to the ...



Power distribution panel is a central controlling hub for electrical distribution in a building where power is received and distributed to the different power utilization source of equipment.



They are generally used as a distribution box during a main upstream breaker. Line wires are connected to these lugs, and the main lug panel can be used as a sub-panel when connected to a breaker from ...



Basic Wiring Diagram: This diagram illustrates the standard wiring configuration of a terminal junction box, including the position of the incoming and outgoing wires, as well as the connections to various ...



See what's inside your electrical service panel, or breaker box, the heart of your home's electrical system.



Circuit Breaker Wiring Methods Live (L) Wire Connection: In a distribution box setup, the incoming live wire (also known as phase or hot wire, denoted as L or Line) connects to the line ...



The inlet end and outlet end of the 1p circuit breaker have only one terminal, so its incoming end is the incoming line connected to the live wire, and the outgoing end is the outgoing line ...



Basic Wiring Diagram: This diagram illustrates the standard wiring configuration of a terminal junction box, including the position of the incoming and outgoing wires, ...

Contact Us

For more information, pricing, or custom network solutions, please contact us:

Website: <https://www.hashherbcafe.co.za>

Email: hello@hashherbcafe.co.za

Phone: +27 63 814 7295

Address: 15 Galaxy Road, Linbro Business Park, Johannesburg, 2065, South Africa

This document is for informational purposes only. Specifications subject to change without notice.

