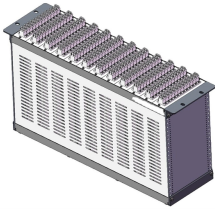


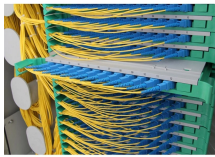
What types of cables do not require cable trays



What types of cables do not require cable trays



Allowed installations include cable trays, raceways, and outdoor locations where supported by a messenger wire. Type TC cable is UL listed for use in Class 1, Division 2 hazardous locations, and ...



Discover the main types of cable containment systems—trays, trunking, and conduits—and learn how to choose the right solution for safe, ...



Section 392.10 of the NEC states that cable trays shall be provided with covers when the tray contains power cables, communication cables, or optical fiber cables in locations where there is ...



All conductors of a circuit, including the neutral and equipment grounding conductors, must be run in the same raceway, cable, trench, cord, or cable tray; except as permitted by 300.3 (B) (1) through (4).



The fill rules differ significantly between single-conductor cables and multiconductor cables, and between ladder tray and solid-bottom tray. Getting the fill calculation wrong results in ...



Table 392.10 (see Table 1) lists the type of cable that is allowed to be installed in tray and the types of raceway that can be used. This table includes almost all common types of wire and cable found in ...



Only cables specifically rated for tray use - such as Type TC (Tray Rated) or Type MC (Metal-Clad) - are allowed. Additionally, ensure cables are separated based on operating voltages to ...



Master the differences between cable pathways, conduits, trays, and pits. This strategic guide helps you choose the right infrastructure to ensure long-term network reliability and performance.



Mesh door/glass door optional
Sp-601 glass door Sp-602 mesh door

Two common alternatives to open wiring (types of an enclosed wiring system) are cable conduit and cable tray. Let's focus on which one to choose for your electrical application.



Steel cable trays shall not be used as equipment grounding conduc- power, lighting, control, and signal cables, the maximum tors for circuits with ground-fault protection above 600 amperes.



Tray Cable for use in Residential Applications family dwellings in Section 336.10(9). Tray cable with both power and control conductors is permitted to be used (without being install



A literal interpretation of the old code language would allow a type NM cable to be used in any residential storage building, with no restrictions on what's being ...

Contact Us

For more information, pricing, or custom network solutions, please contact us:

Website: <https://www.hashherbcafe.co.za>

Email: hello@hashherbcafe.co.za

Phone: +27 63 814 7295

Address: 15 Galaxy Road, Linbro Business Park, Johannesburg, 2065, South Africa

This document is for informational purposes only. Specifications subject to change without notice.

