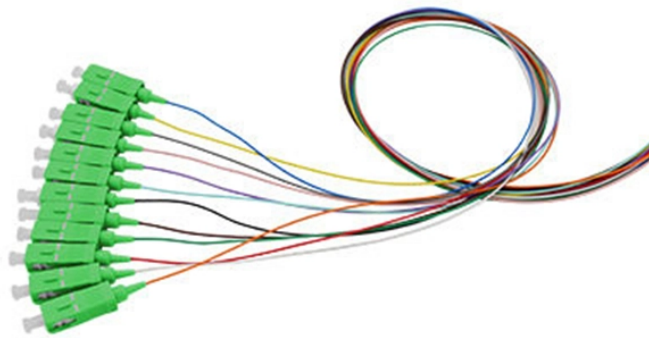


What type of enclosed fireproof cable tray is it



What type of enclosed fireproof cable tray is it



The trough-type fireproof Cable Tray is a fully enclosed trough structure, made entirely of cold-rolled steel plates. Its surface is treated with fireproof coating or electrostatic spraying, ...



Choose appropriate fire protection materials, such as fire-rated board, firestop packs, firestop mastic, or fire-resistant mineral wool. Firestop packs ...



A fully enclosed cable tray, which is most suitable for laying computer cables, communication cables, thermocouple cables and other control cables of high-sensitivity systems, shielding interference and ...



Fire Rated Cable Trays are designed to safeguard your cables in the event of fire. It provides a critical layer of protection, preventing the spread of flames along cable runs, even when concealed behind ...



Ferrotech FRP cable trays have been tested by independent authorities as per various specifications. Our cable trays are manufactured as per NEMA standards and the Fire Retardant Grade confirms to ...



Fire-resistant cable tray and conduit assemblies are designed to withstand extreme temperatures, preventing the spread of fire and ensuring the continued operation of critical equipment.



Our 4-hour fire rated cable encasements provide comprehensive fire and blast protection, shielding cables from fire and containing high voltage cable fires



This article will delve into the best cable tray materials for fire-resistant installations, offering valuable insights for professionals involved in construction, electrical work, and facility ...



Fireproof Trough-Type (Enclosed) Cable Tray High Protection Rating: Completely isolates dust, moisture, oil contamination, and external mechanical damage, providing the most comprehensive ...



We design custom cable enclosures that protect against fire & blasts. Cost-effective protection with quick installation and NEC & NFPA compliant solutions.



Choose appropriate fire protection materials, such as fire-rated board, firestop packs, firestop mastic, or fire-resistant mineral wool. Firestop packs should be placed in an orderly sequence.

Contact Us

For more information, pricing, or custom network solutions, please contact us:

Website: <https://www.hashherbcafe.co.za>

Email: hello@hashherbcafe.co.za

Phone: +27 63 814 7295

Address: 15 Galaxy Road, Linbro Business Park, Johannesburg, 2065, South Africa

This document is for informational purposes only. Specifications subject to change without notice.

