

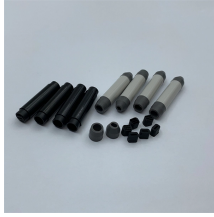
What type of elbow is used for cable tray turning



Overview

The type of elbow depends on the severity of the turn. I'm talking about the cable ladder elbow (30 deg, 45 deg, 90 deg), the cable ladder horizontal elbow, the cable ladder vertical elbow, the cable ladder adjustable elbow, the cable ladder tee, the cable ladder reducing tee, the cable ladder cross, and the cable ladder reducer. These are not just. The aluminum I-beam design of ltray is perfect for industrial installations with large diameter cables in long span situations, minimizing total tray width and creating a smooth transition between straight sections and fittings. A structural offset in the sidewall creates strong, mid-span splices. A range of nearly twenty fittings makes the system customizable, accommodating any kind of tricky configuration. This fitting allows for a 90-degree turn vertically within a cable tray installation. Vertical Outside Elbow 90° design made by Nam Phuong Viet with high-quality, conforms to the requirements of technical standards, and application for all.

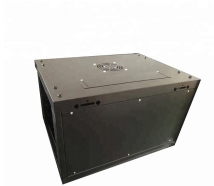
What type of elbow is used for cable tray turning



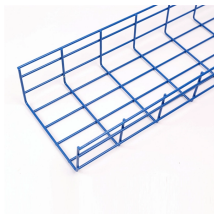
The aluminum I-beam design of Itray is perfect for industrial installations with large diameter cables in long span situations, minimizing total tray width and creating a smooth transition between straight ...



Learn about ladder cable tray elbows, their types, and how to choose the right one for secure and efficient cable installation in your system.



45-degree elbows manage medium-sharp turns. This is a very common part for corners that aren't quite square. 90-degree elbows are for sharp, square corners. Use the 90-degree elbow ...



The 45° Horizontal Elbow boasts a horizontal bend that grants the flexibility for a 45° cable tray to navigate left or right. Moreover, this design ensures a secure cable support platform during cable tray ...



The aluminum I-beam design of Itray is perfect for industrial installations with large ...



The aluminum I-beam design of ITray is perfect for industrial installations with large diameter cables in long span situations, minimizing total tray width and creating a smooth transition between straight ...



Product Description The United Structural Products A62-09-90VI12-06-G is a vertical inside 90-degree elbow made for cable tray systems. This fitting allows for a 90-degree turn vertically within a cable ...



Use elbows for turns, tees for branching, and reducers when tray/ladder sizes change. Choose trays for light cable needs, and ladders for heavy cables or industrial installations.



A Vertical Outside Elbow is a fitting used in cable tray systems specifically designed to make a 90-degree downward turn.



Cable Tray Ladder SC/SLW Type NOBI Series - Free download as PDF File (.pdf), Text File (.txt) or read online for free. This document provides information on standard ladder, elbow, tee, and cross ...



Cope zero tangent elbow fitting for compact cable tray layouts. Saves space and eases installation.

Contact Us

For more information, pricing, or custom network solutions, please contact us:

Website: <https://www.hashherbcafe.co.za>

Email: hello@hashherbcafe.co.za

Phone: +27 63 814 7295

Address: 15 Galaxy Road, Linbro Business Park, Johannesburg, 2065, South Africa

This document is for informational purposes only. Specifications subject to change without notice.

