

## What type of cable should be selected for the temporary distribution box



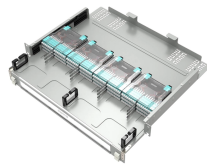
### Overview

Type NM and Type SE cables, exposed or concealed, can be used for temporary power in any building, without any height limitations based on the type of construction. If the temporary. Temporary cable can be used to connect a variety of equipment in mission critical facilities, such as generators, load banks, and other electrically powered equipment. Cables must be selected based on their environmental resistance, voltage capacity, and application-specific demands. Before placing a temporary distribution in service, teams must assess site hazards and define controls. 10), but for temporary jobsite power during construction, nonmetallic sheathed cables are permitted to be strung throughout the building, or installed above.

## What type of cable should be selected for the temporary distribution



Practical guidance for temporary power in Ex zones: selecting cabling, enclosures, grounding, and protection methods. Learn compliance, inspection and safe setup procedures for ...



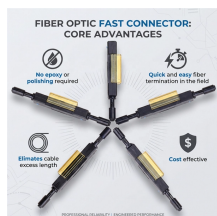
Distribution Cabling: These cables will normally be multi-strand multi-core armoured or exible PVC cables but, in certain cases, may take the form of mineral insulated copper clad (m.i.c.c.) cables.



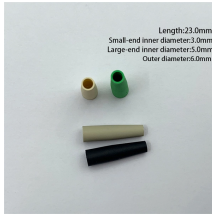
Cables should be of a robust, pliable wire, armoured type, properly routed. Local mains switches and circuit breakers should be installed in a semi permanent, ...



Flexible Wiring Methods: Article 590 allows for the use of nonmetallic jacketed cables and flexible cords for temporary branch circuits and feeders, including Types NM, NMC, and SE cable.



Flexible cords and cables laid on the ground must be approved for extra-hard usage, routed and arranged to minimize the tripping hazard and be protected from accidental and physical damage.



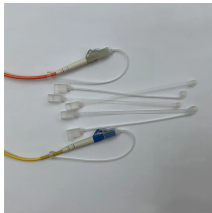
Typically, temporary power applications require the use of 4/0 type W cable (also called 4/0 AWG cable), and there are three key best practices to consider when routing these.



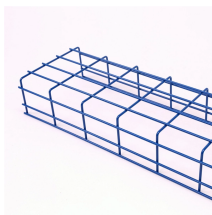
Flexible cords and cables entering enclosures containing devices requiring termination shall be secured to the box with fittings listed for connecting flexible cords and cables to boxes designed for the ...



Type NM and Type SE cables, exposed or concealed, can be used for temporary power in any building, without any height limitations based on the type of construction.



(1) Type NM, Type NMC, and Type SE cables shall be permitted to be used in any dwelling, building, or structure without any height limitation or limitation by building construction type and without ...



Cables should be of a robust, pliable wire, armoured type, properly routed. Local mains switches and circuit breakers should be installed in a semi permanent, weatherproofed, tamper-proofed, cubicle or ...



Choosing the correct type of temporary cable is critical to safety and operational efficiency. Cables must be selected based on their environmental resistance, voltage capacity, and ...

## Contact Us

For more information, pricing, or custom network solutions, please contact us:

Website: <https://www.hashherbcafe.co.za>

Email: [hello@hashherbcafe.co.za](mailto:hello@hashherbcafe.co.za)

Phone: +27 63 814 7295

Address: 15 Galaxy Road, Linbro Business Park, Johannesburg, 2065, South Africa

This document is for informational purposes only. Specifications subject to change without notice.

