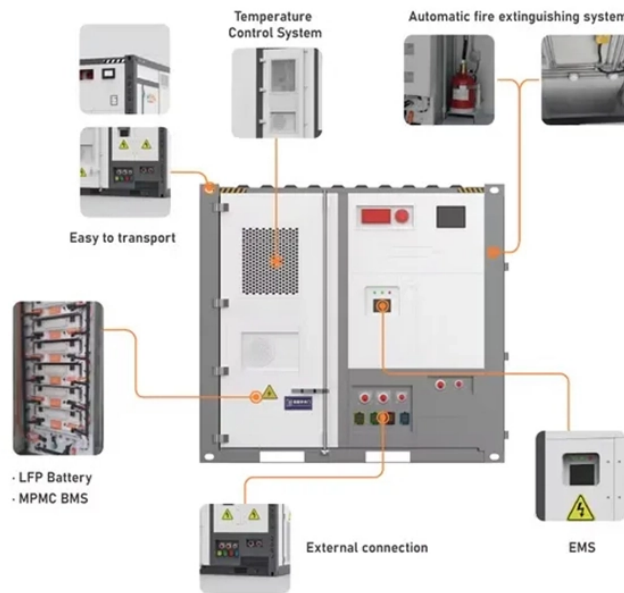


What to pay attention to when installing a home electrical distribution box



Overview

In this guide, we'll break down everything you need to know to install a distribution box correctly and confidently. Choose the right box based on environment (indoor/outdoor), load capacity, and durability. Check for proper IP/NEMA ratings and material quality. Ensure safe placement: install in. In modern electrical systems, cable distribution boxes (also known as electrical distribution boxes or distribution boxes) play a crucial role as the key hub for managing, distributing, and protecting circuits. This causes stress and can lead to house fires. Safety is the top priority when.



What to pay attention to when installing a home electrical distribut



Learn how to install a distribution box safely and correctly. Covers wiring, placement, standards, and expert tips for a compliant setup.



Proper installation of a distribution box requires careful planning and adherence to electrical codes. While major installations should always involve qualified electricians, understanding ...



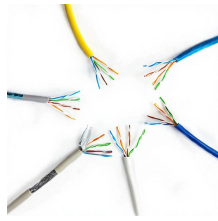
A well-chosen distribution box ensures the safety and efficiency of your household electrical system. This article guides you through selecting a distribution box that is both affordable ...



Install electrical boxes safely and correctly. Guide covers critical sizing, safety protocols, and methods for existing or new walls.



Welcome to our channel! In this video, we'll walk you through the process of wiring a home distribution box with a detailed connection diagram.



This article provides a detailed overview of the entire process of installing a distribution box, from pre-installation preparation to post-installation maintenance, and summarizes common ...



Learn how to choose the right home distribution box with our expert guide. Compare circuit capacity, IP ratings, breaker types & avoid common mistakes.



Electrical box installation is regarded as easy work—more like carpentry than electrical wiring. But there are still some common errors that do-it-yourselfers frequently make. Follow these ...



Before starting the installation, finding a proper place for putting the distribution box is crucial, because it largely decides the safety and convenience of maintenance. Let's see what factors ...



Whether in your own home, in a rented apartment or in a business, the distribution box is a central element of every electrical system. Despite this, it often ekes out an inconspicuous existence in the ...

Contact Us

For more information, pricing, or custom network solutions, please contact us:

Website: <https://www.hashherbcafe.co.za>

Email: hello@hashherbcafe.co.za

Phone: +27 63 814 7295

Address: 15 Galaxy Road, Linbro Business Park, Johannesburg, 2065, South Africa

This document is for informational purposes only. Specifications subject to change without notice.

