

What size should the button holes in the distribution box be



Overview

Pushbuttons are described by their mounting hole diameter, i. So these represent the diameter of the punched hole required to install the button. Is this based on the larger portion of the button at the head or the thinner portion at the base?

If it is based on the top, then what is the diameter at the base?

Pushbuttons are described by their. Available in 22.5 mm configurations with 1 to 42-hole options, our pushbutton enclosures are offered in stainless steel, steel, and non-metallic materials to suit different environmental and application needs. Each model is built for durability and is rated for NEMA 4X or IP65. For distribution boxes that handle only lighting circuits or small power loads, if the incoming wire size is less than 10 square millimeters and the number of circuit switches is fewer than 20, the width of the box should be calculated by summing the width of the switches and adding an additional. stallation and use of boxes. The box capacity table shown (page A-5) is reproduced in part from the NEC® as a quick reference and. Understanding

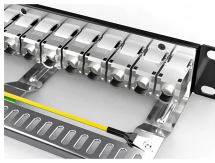
your enclosure material ensures you choose the right tool and use the correct technique, leading to precise, professional-looking push button holes. Cutting corners (pun intended!) can lead to rough edges, cracks, or even a ruined enclosure. So, plan ahead and cut smart! When it comes. The wetland box shall have a minimum bottom dimension of 12" by 12" and shall be 28" tall. The box shall be supplied with fittings to provide a 9" nominal adjustable water level for a maximum wetland depth of 16" and a minimum depth of 6".

WETLAND LINER The wetland liner shall be composed of a 20.

What size should the button holes in the distribution box be



Pushbuttons are described by their mounting hole diameter, i.e. 22.5, 30.5 or 16mm. So these represent the diameter of the punched hole required to install the button.



Explore Tuf-Tite® distribution and drop boxes designed for durable, leak-proof performance in both level and sloped septic system installations.



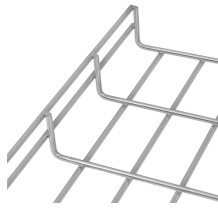
This guide explores control panels, electrical boxes, breaker panels, bus bars, junction boxes, and custom enclosures to help you understand their sizes, types, and common applications.



If the distribution box is to be embedded within the wall, the cutout should be approximately 20 millimeters larger than the box's dimensions. The depth should match the thickness ...



(3) Support Fittings Fill. Where one or more luminaire studs or hickies are present in the box, a single volume allowance in accordance with Table 314.16(B) shall be made for each type of fitting based on ...



The wetland outlet box shall be constructed of non-corrosive high-density polyethylene plastic. The wetland box shall have a minimum bottom dimension of 12" by 12" and shall be 28" tall.



Explore pushbutton enclosures in 22.5 mm and 30.5 mm sizes with 1 to 42 holes, available in stainless steel, steel, and non-metallic NEMA 4X models.



Learn how to cut a precise push button hole in enclosures with the right tools and techniques. Avoid rough edges, chipping, and damage for a professional finish.



California Department of Transportation | Caltrans



Understand distribution boxes (DB boxes) in 5 minutes. Learn about types, components, functions, and uses. Find the perfect DB box for your needs.

Contact Us

For more information, pricing, or custom network solutions, please contact us:

Website: <https://www.hashherbcafe.co.za>

Email: hello@hashherbcafe.co.za

Phone: +27 63 814 7295

Address: 15 Galaxy Road, Linbro Business Park, Johannesburg, 2065, South Africa

This document is for informational purposes only. Specifications subject to change without notice.

