

What s needed to connect a third-level distribution box



Overview

In this guide, we'll break down everything you need to know to install a distribution box correctly and confidently. Choose the right box based on environment (indoor/outdoor), load capacity, and durability. Check for proper IP/NEMA ratings and material quality. Electrical equipment is installed under the switch box, forming a three-level distribution. "Two level protection" mainly refers to the use of leakage protection measures. In addition to installing leakage protectors in the final switch box, a first level leakage protector should also be installed. The three-level distribution system refers to a system that distributes electric power through three levels of distribution devices from the incoming power line at the construction site to the electrical equipment. The following is a detailed introduction about it: - **First-level Distribution. After stepping down the voltage through the transformer's low-voltage side (0. A correct installation process minimizes the risk of electrical faults and increases the longevity of your setup.

What s needed to connect a third-level distribution box



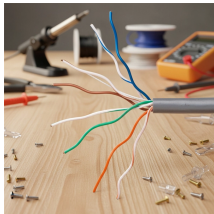
Learn about the different components of a residential utility pole diagram, including power lines, transformers, meters, and more. Find out how these elements work together to deliver electricity to ...



pronunciation note: Usually pronounced (hwɒt) for meanings [sense 2], [sense 4], [sense 5] and [sense 18]. You use what in questions when you ask for specific information about something that you do ...



a) used to ask someone to repeat something they have just said because you did not hear it properly "Could you turn the music down a bit?" "What?".
b) used when you have heard someone calling to you ...



Learn how to install a distribution box safely and correctly. Covers wiring, placement, standards, and expert tips for a compliant setup.



In this video, we'll walk you through the process of wiring a home distribution box with a detailed connection diagram.



Third level distribution box: refers to the final junction box of each electrical appliance, which can be movable and fixed. Remember that the leakage protection switch is the last one, and ...



Guess what is often used to tell someone that you have surprising news. Guess what happened to me today! " Guess what!" "What?" "I bought a new car." I'll tell you what I'm going to do: I'm going to let ...



(used interrogatively as a request for specific information). What is the matter? (used interrogatively to inquire about the character, occupation, etc., of a person). What does he do? (used interrogatively to ...



A Simple Definition is available from our Learner's Dictionary to help you understand the meaning faster. What is this? What is wealth without friends? What does he earn? What hath God wrought? You said ...



You can't install feeder and branch-circuit conductors in the same raceway, cable, handhole enclosure, or underground box with service conductors [230.7]. Doing this would bypass the feeder or branch ...



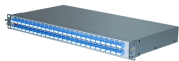
What with singing and joking, the time passed quickly. Such; this is; that is. Why? An interrogative which asks "Don't you agree?" It's rather late, what? which; which kind of. an expression of surprise or ...



In this guide, we will break down the key elements involved in connecting the main power supply to your home, providing a clear path for a successful setup. We will focus on the critical parts of the system, ...



Generally, the first-level distribution box is required to be installed in a place with a relatively high terrain, dry and ventilated, and the second-level and third-level distribution boxes should be as close as ...



Definition of what pronoun from the Oxford Advanced Learner's Dictionary. used in questions to ask for particular information about somebody/something. What is your name? What (= what job) does he ...



The point of attachment (the point where the AE service contacts the Customer's structure or building) shall be located on a permanent building or structure at a point nearest AE's closest suitable voltage ...



Learn about the three-tier power distribution system (main secondary tertiary distribution boards) in a new residential area including their roles connections and safety measures for 0.4kV power supply.



We use what to ask questions and as a pronoun and determiner. ... We can use what to ask for information about things and actions: ... We can use what in informal situations to ask someone to ...



Learn how to connect a distribution box with this easy-to-follow, step-by-step guide. From tools and materials needed to common installation mistakes and solutions, this comprehensive article will ...

Contact Us

For more information, pricing, or custom network solutions, please contact us:

Website: <https://www.hashherbcafe.co.za>

Email: hello@hashherbcafe.co.za

Phone: +27 63 814 7295

Address: 15 Galaxy Road, Linbro Business Park, Johannesburg, 2065, South Africa

This document is for informational purposes only. Specifications subject to change without notice.

