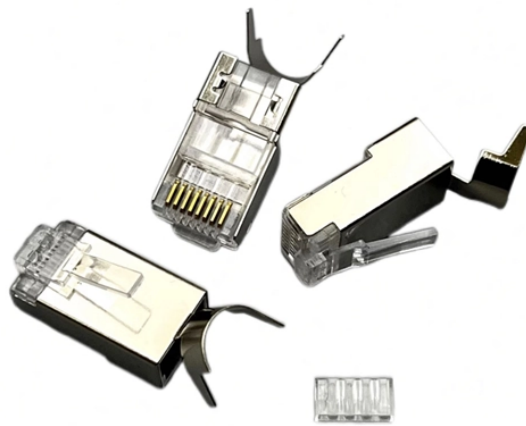


What quota should be applied to the installation of cable management racks



Overview

Most cable pathway and management product manufacturers offer a cable fill table to help specify the right sized products for cable management needs. As a good rule of thumb, plan for a fill rate of approximately 50%. Professional cable management guide for 2026 network racks. Modern network racks face new physical constraints: deeper switches, hotter PoE++ loads, and. However, any installation must adhere strictly to the National Electrical Code (NEC) standards. This compliance is not merely a regulatory formality; it significantly enhances the safety and reliability of the electrical system, ensuring that installations can pass inspections and function. According to the ITIC 2024 Hourly Cost of Downtime Report, a single hour of unplanned outage could cost over CAD 300,000 for more than 90% of mid-size and large enterprises. Effective server room cable management reduces these risks while simplifying audits and preparing your infrastructure for. Work covered in this section consists of the furnishing of all necessary labor, supervision, materials, equipment, and services to completely execute the cable runway system as

described in this specification and as shown on the drawings. However, when you step into a well-maintained data center, you won't find a.

What quota should be applied to the installation of cable management



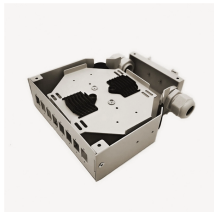
QUOTA definition: the share or proportional part of a total that is required from, or is due or belongs to, a particular district, state, person, group, etc. See examples of quota used in a sentence.



Learn Cat6A requirements for Wi-Fi 7, PoE++ thermal management, SFP+ uplinks, and proper installation techniques for 10Gbps infrastructure. Modern network racks face new physical ...



Tray fill requirements are determined by several factors, including cable diameter, whether the cables are single-conductor or multi-conductor, the width and depth of the tray, and the ...



A quota is a government-imposed trade restriction that sets a physical limit or monetary value on the quantity of a good that can be imported or exported during a specific timeframe.



quota (on something) a limited number or amount of people or things that is officially allowed. an amount of something that somebody expects or needs to have or achieve. I'm going ...



Quota is one of golf's most popular points-based formats. In Quota, every player competes against their own scoring target rather than the entire field—this guide explains how to ...



Use horizontal and vertical cable managers to keep cables properly routed. Determine whether fiber or copper is appropriate based on distance and bandwidth requirements. Fiber is ...



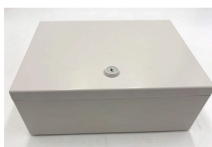
Tray fill requirements are determined by several factors, including cable diameter, whether the cables are single-conductor or multi-conductor, the width and depth of the tray, and the ...



All cable and equipment shall be installed in a neat and workmanlike manner. All methods of construction that are not specifically described or indicated in the contract documents shall be ...



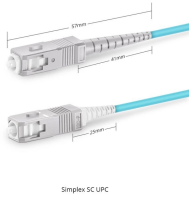
QUOTA definition: 1. a fixed, limited amount or number that is officially allowed: 2. a fixed, limited amount or.... Learn more.



The meaning of QUOTA is a proportional part or share; especially : the share or proportion assigned to each in a division or to each member of a body. How to use quota in a sentence.



A quota is a fixed maximum or minimum proportion of people from a particular group who are allowed to do something, such as come and live in a country or work for the government.



Most cable pathway and management product manufacturers offer a cable fill table to help specify the right sized products for cable management needs. As a good rule of thumb, plan for ...



Single-sided cable managers restrict cable organization to one side of the rack, typically the front, while double-sided cable managers provide pathways on both the front and rear sides, facilitating separate ...



Q: What is the ideal cable bend radius? A: Follow manufacturer specifications—typically four times the diameter for Cat 6 and ten times for fibre to prevent signal loss.



The quantity of connections required depends on the specific needs of devices and racks, as well as the electric connections necessary.



Quota International is a non-profit organization empowering women, children, the deaf and hard-of-hearing, and people with speech difficulties in local communities around the world.



Learn Cat6A requirements for Wi-Fi 7, PoE++ thermal management, SFP+ uplinks, and proper installation techniques for 10Gbps infrastructure. ...



3.2 All racks/cabinets must be attached to the floor in four places using appropriate floor mounting anchors. When placed over a raised floor, threaded rods should pass through the raised floor tile and ...



In this occasion, we'll analyze the basics of data center wire management, from picking the right cable manager for network rack systems to implementing the best proven practices in a ...

Contact Us

For more information, pricing, or custom network solutions, please contact us:

Website: <https://www.hashherbcafe.co.za>

Email: hello@hashherbcafe.co.za

Phone: +27 63 814 7295

Address: 15 Galaxy Road, Linbro Business Park, Johannesburg, 2065, South Africa

This document is for informational purposes only. Specifications subject to change without notice.

