

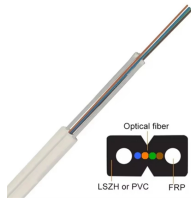
What parts are optical power meters used for



Overview

Optical Power meters are most commonly used for: Measuring the absolute power in a fiber optic signal, requiring calibration at the corresponding wavelength. Measuring the optical power margin. Keysight optical power meters measure optical signal strength, providing multi-channel measurement processing and system control while offering rapid response times, wide dynamic range, and simple integration into automated test setups. Other general purpose light power measuring devices are usually called radiometers, photometers, laser power. Below are general answers on typical components of an optical power meter product from the list of GAO Tek's optical power meter. Beginners may find it complex, but understanding its function makes it.

What parts are optical power meters used for



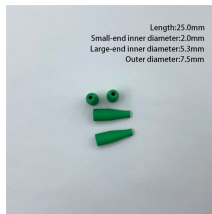
Overview
Sensors
Power measuring range
Calibration and accuracy
Extended sensitivity meters
Pulse power measurement
Common fiber optic test applications
Test automation



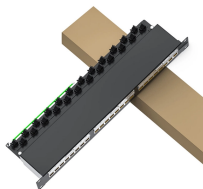
An Optical Power Meter (OPM) is used with a light source to measure signal loss in a fiber optic cable or channel. The light source launches into one end of the fiber optic cable, while the ...



Optical Power Meter (OPM) from AFL measures optical power in fiber optic networks, also measures insertion loss of MM or SM cables if used with Light Source.



Typical bench-top and handheld optical power meters support one or two detectors or optical heads. High-end multi-port meters support up to eight or more detectors or optical heads.



Scalable optical measurement for high-volume photonic testing
Keysight optical power meters measure optical signal strength, providing multi-channel measurement processing and system control while ...



OPMs are used in a variety of optical sensing applications, including fiber optic communication systems, optical sensing and measurement, and optical component testing.



Commonly, a power meter on its own is used to measure absolute optical power, or used with a matched light source to measure loss. When combined with a light source, the instrument is called ...



An optical power meter may appear simple, but it has several important parts that work together to provide accurate readings. The main component is the photodiode sensor, which detects ...



Learn about the essential components of optical power meters, including detectors, displays, and signal processing units for accurate light measurement.



An optical power meter is an instrument for measuring the optical power (energy per unit time) in a light beam, such as a laser beam. It typically measures the average power with a relatively low bandwidth.



Optical power meters typically use semiconductor detectors since they are sensitive to light in the wavelengths and power levels common to fiber optics. Most fiber optic power meters are available ...

Contact Us

For more information, pricing, or custom network solutions, please contact us:

Website: <https://www.hashherbcafe.co.za>

Email: hello@hashherbcafe.co.za

Phone: +27 63 814 7295

Address: 15 Galaxy Road, Linbro Business Park, Johannesburg, 2065, South Africa

This document is for informational purposes only. Specifications subject to change without notice.

