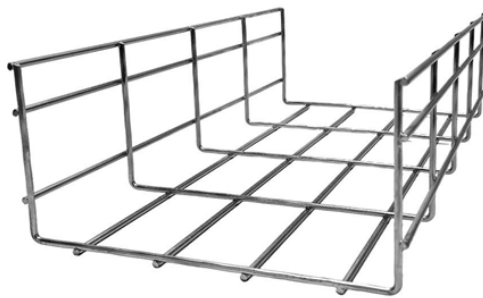


What optical modules need to be used in pairs



Overview

Optical fiber and optical module should be used in pairs, that is, single-mode optical module using single-mode fiber, multi-mode optical module using multi-mode fiber, do not mix. Everything you need to build an optical network from end-to-end. Thin-film filter and PLC based AWG for multiplexing, a full suite of components for optical amplification use, optomechanical or MEMS-based switches for protection or surveillance application, Tap PD for power monitoring and VOA for. SFP (Small Form-factor Pluggable) is a compact, hot-pluggable network interface module used to connect network devices (switches, routers, firewalls) to fiber optic or copper cables. Think of it as the “translator” for your network equipment, converting electrical signals into optical signals. The optical module serves as a crucial component in optical fiber communication systems, operating at the physical layer, which is the lowest layer in the OSI model. This article helps network and field engineers, plus diligent infra. Understand the core function, compare data rates (1G to 25G), learn critical compatibility rules, and follow our 5-step checklist for selecting the perfect SFP optical module for your network build.

What optical modules need to be used in pairs



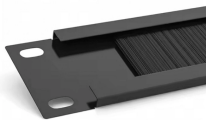
Read the definitive 2026 guide on SFP modules. We explain Single Mode vs Multimode, DDM diagnostics, and how to choose the right transceiver for Cisco, Juniper, and more.



Everything you need to build an optical network from end-to-end. Thin-film filter and PLC based AWG for multiplexing, a full suite of components for optical amplification use, optomechanical or MEMS-based ...



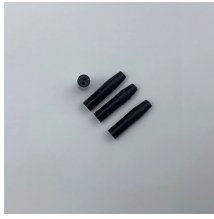
Explore the classification of optical modules based on transmission rate, package type, mode, central wavelength, and color. Learn about common causes of optical module failure and protective measures.



Explore the ultimate guide to optical modules. Learn types, functions, performance metrics & how to choose the right module for your fiber network.



When you pick up an optical transceiver module, several parameters need to be defined to ensure compatibility and efficiency. These include physical dimensions, interface types, spectral ...



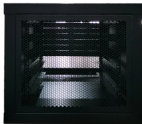
Learn how to select optical modules for AI/ML clusters: specs, compatibility, ROI, pitfalls, and field-tested troubleshooting for 25G to 400G links.



Understand the core function, compare data rates (1G to 25G), learn critical compatibility rules, and follow our 5-step checklist for selecting the perfect SFP optical module for your network build.



Choose the right 10G Bidi SFP+ Modules by checking compatibility, distance, wavelength pairing, and reliability for optimal network performance.



High-speed data transmission in enterprise and data center networks is driven by 10G optical modules. Choosing the proper SFP+ module, whether it be SR, LR, or ER, can have ...



10G SFP+ LR optical module operates at a wavelength of 1310nm, using LC duplex interfaces, and pairs with single-mode duplex fiber patch cords OS2 for distances up to 10KM.

Contact Us

For more information, pricing, or custom network solutions, please contact us:

Website: <https://www.hashherbcafe.co.za>

Email: hello@hashherbcafe.co.za

Phone: +27 63 814 7295

Address: 15 Galaxy Road, Linbro Business Park, Johannesburg, 2065, South Africa

This document is for informational purposes only. Specifications subject to change without notice.

