

## What is the required thickness for cable trays



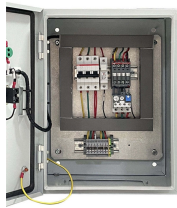
## What is the required thickness for cable trays



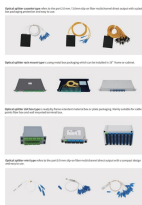
However, selecting the correct thickness and width of a cable tray is essential to maximize performance, avoid safety hazards, and minimize costs. This article explains the key ...



This guide for engineers and installers has been developed by ABB as a practical reference regarding cable tray characteristics, installation, and requirements.



IEC 61537 is the internationally recognized benchmark for metal cable tray systems. It applies to cable trays made of steel, stainless steel, aluminum, or other metallic materials. The ...



Use this cable tray sizing calculator to check fill %, select tray size, and comply with IEC 61537 & NEC 392 with formulas, example and checklist.



Specifies requirements for metal cable trays and associated fittings designed for use in accordance with the rules of Canadian Electrical Code, Part I and the National Electrical Code®



Some applications may require the cable tray to support the weight of a single, dead object in addition to the cable loads. Specifications typically require this to be applied at the midpoint of the span between ...



This article explains the main requirements and good practices for cable tray systems, including tray types, materials, loading, supports, bonding, cable selection, and installation details.



According to the 2017 standard, the maximum thickness of corrugated groove steel cable tray plate is 0.8mm, the minimum thickness is 0.7mm, and the maximum thickness and minimum ...



Explore standard sizes by tray type, understand width and depth limits, and see how to calculate and choose compliant cable tray sizes for real projects.



Cable tray thickness should be selected based on the total cable load, tray width, support span, and material strength. Heavier cable runs require thicker trays and stronger materials to ...



For ladder or ventilated trough trays, the total sum of the cross-sectional areas of all the cables to be installed in the cable tray must be equal to or less than the allowable cable area for the tray width, as ...



For each requirement, it states the proposed product details and confirms compliance. The proposed cable trays are constructed from stainless steel or ...



Explore standard sizes by tray type, understand width and depth limits, and see how to calculate and choose compliant cable tray sizes for real projects.

## Contact Us

For more information, pricing, or custom network solutions, please contact us:

Website: <https://www.hashherbcafe.co.za>

Email: [hello@hashherbcafe.co.za](mailto:hello@hashherbcafe.co.za)

Phone: +27 63 814 7295

Address: 15 Galaxy Road, Linbro Business Park, Johannesburg, 2065, South Africa

This document is for informational purposes only. Specifications subject to change without notice.

