

What is the line voltage and phase voltage of a 35kV busbar



What is the line voltage and phase voltage of a 35kV busbar



Each bushing shall have identification affixed to the front plate identifying its source or tap designation, as shown on the one-line operating diagram, and its phase identification.

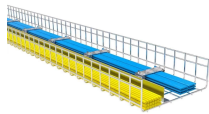


Table 1 covers voltages from 1kV to 245kV and lists nominal system voltages, ...



In this article, unless otherwise specified, voltages are given as line-to-line voltages; this follows normal industry practice, but it is sometimes a source of confusion. The four major voltage classes are 5, 15, ...



Three-phase electric power is more efficient in terms of power delivered per cable used, and is more suited to running large electric motors. Some large European appliances may be powered by three ...



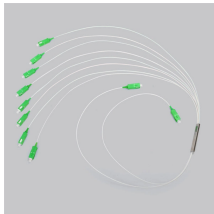
Most distribution voltages are between 4 and 35 kV. In this article, unless otherwise specified, voltages are given as line-to-line voltages; this follows normal industry practice, but it is ...



Compare 5kV, 15kV, 25kV, and 35kV medium voltage cables. Master technical specs and market applications to optimize your inventory and provide expert guidance to your contractor ...



Following a known over-voltage condition caused by one phase on a closed wye-delta bank becoming de-energized, the lightning arresters on the open phase that experienced the over-voltage condition ...



When the fault occurred, the voltage of phases A and C on the 35kV busbar No.1 rose to line voltage while the voltage of phase B approached zero. This is characteristic of a typical single-phase metallic ...



C& S Electric offers a highly-efficient isobar range of isolated phase busduct from 11 kV to 38 kV & current rating of up to 30000A. Explore the feature details.



For details about technical design and equipment like e.g. technical data, secondary equipment, circuit diagrams, please refer to the order documents. The switchgear is subject to ...

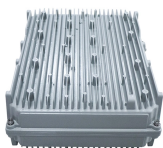


Table 1 covers voltages from 1kV to 245kV and lists nominal system voltages, maximum equipment voltages, insulation levels, and minimum indoor and outdoor phase-to-earth and phase-to-phase ...

Contact Us

For more information, pricing, or custom network solutions, please contact us:

Website: <https://www.hashherbcafe.co.za>

Email: hello@hashherbcafe.co.za

Phone: +27 63 814 7295

Address: 15 Galaxy Road, Linbro Business Park, Johannesburg, 2065, South Africa

This document is for informational purposes only. Specifications subject to change without notice.

