

What is the junction box on the utility pole called



Overview

Crossarms: Crossarms are horizontal extensions attached to the power pole. They provide a platform for mounting insulators, transformers, and other equipment. While we often just call them “poles,” these structures are carefully engineered to withstand the elements and support significant weight.

Wood Poles: The most common type, usually made from pine or cedar, treated to prevent rot and insect. Spaces on a typical joint pole. Source: Florida Public Service Commission

Very few utility poles are used for just one utility. Also curious which line belongs to cable vs fiber ISP

Wasp nest Copper telephone terminal

So the arrow is pointing to a junction pick for telephone lines (twisted pairs) for a.

A power pole diagram is a visual representation of the structure and components of a power pole, which is an essential part of electrical distribution systems. These diagrams are used by engineers, technicians, and utility workers to understand the layout, connections, and safety features of power. Utilities in the streetscape consist of utility poles and overhead wires, surface-mounted utility boxes, utility mains, laterals, vaults, and valves. Utility installation can.

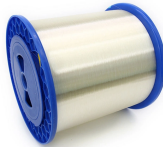
What is the junction box on the utility pole called



Residential utility poles contain multiple components, including crossarms, insulators, transformers, and communication attachments. The crossarms provide a platform ...



Crossarms: Crossarms are horizontal extensions attached to the power pole. They provide a platform for mounting insulators, transformers, and other equipment. Crossarms are usually made of wood or ...



Discover the essential equipment on electric utility poles, including wires, transformers, and safety features that ensure reliable electricity delivery to your home.



Attached to the power poles are porcelain or polymer insulators to keep electricity from flowing to undesired places. Fused cutouts act like a circuit breaker, isolating the tap line from the main line.



Residential utility poles contain multiple components, including crossarms, insulators, transformers, and communication attachments. The crossarms provide a platform for the cables and wires to be ...



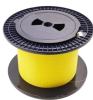
Transformers: These cylindrical or rectangular boxes are probably the most recognizable pieces of equipment. They “step down” the high voltage from primary lines to the lower voltage used ...



Utilities in the streetscape consist of utility poles and overhead wires, surface-mounted utility boxes, utility mains, laterals, vaults, and valves. They include sewer, water, gas, and telecommunications, ...



This illustration shows common equipment found on electric power distribution poles. Not every pole contains all of this equipment—configurations vary based on location and the type of service provided.



Telephone is usually the lowest on the pole, with cable TV right above it. Telephone lines are generally thick cables and usually have junction boxes on one or both sides of the pole.



The old copper network that's being replaced by that roll of fiber. That's a Western Electric can pole mounted terminal.



Distribution poles are those you see in your neighborhood, unless your distribution lines run underground. They are generally up to 55 feet tall and made of wood.

Contact Us

For more information, pricing, or custom network solutions, please contact us:

Website: <https://www.hashherbcafe.co.za>

Email: hello@hashherbcafe.co.za

Phone: +27 63 814 7295

Address: 15 Galaxy Road, Linbro Business Park, Johannesburg, 2065, South Africa

This document is for informational purposes only. Specifications subject to change without notice.

