

What is the appropriate height for a single-layer cable tray



Overview

Apply fill limits per NEC — For single conductor cables 2000 kcmil or larger, fill the tray to a single layer only. 22 (A) limits fill to the maximum rail height or specific area percentages. 22 (A)] Apply derating for stacking — When cables are. Ladder tray is the standard choice for power cables in industrial facilities. It handles heavy cable loads and spans up to 20 feet between supports depending on loading. The open construction makes cable installation and removal straightforward. Ventilated trough tray has a solid bottom with. According to NEC Article 392.



What is the appropriate height for a single-layer cable tray



We will first explain standard cable tray dimensions used across the industry, then examine how dimensions vary by tray type, and finally show how to calculate and select the correct ...



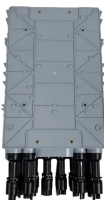
Master NEC Article 392 with our comprehensive guide. Learn essential cable tray requirements for installation, grounding, and fill capacity to ensure full electrical compliance.



We will first explain standard cable tray dimensions used across the industry, then examine how dimensions vary by tray type, and finally show how to ...



According to NEC Article 392.10 (B) (1) (c), the maximum allowable rung spacing for cable trays supporting these sizes of single conductor cables is 9 inches (229 mm).



Calculate cable tray fill per NEC 392 — ladder, solid-bottom, and ventilated trough trays with sizing examples and code requirements.



For conductors of 1,000 kcmil and above, they must be installed in a single layer, ensuring their combined diameters do not exceed the tray width. Similarly, for single conductors ...



The cable tray calculator determines the required tray width and type based on the number and size of cables to be installed, ensuring adequate fill levels and derating compliance.



(1) All single conductors shall be installed in a single layer. (2) Conductors that are bound together to comprise each circuit pair shall be permitted to be installed in other than a single layer. (3) The sum ...



Single-conductor cables must be in a single layer (for sizes 250 kcmil and above), and their diameters count against the tray width. Multiconductor cables can be stacked above the single ...



It provides tables specifying the allowable cable fill area for cable trays of different widths for: multi-conductor cables less than 2000V; single-conductor cables less than 2000V; and cables ...



Single conductor cables that are going to be inserted in the cable tray have to be larger than 1/0 AWG (53.5 Sq. mm), and solid cable tray cannot be used for the installation process.

Contact Us

For more information, pricing, or custom network solutions, please contact us:

Website: <https://www.hashherbcafe.co.za>

Email: hello@hashherbcafe.co.za

Phone: +27 63 814 7295

Address: 15 Galaxy Road, Linbro Business Park, Johannesburg, 2065, South Africa

This document is for informational purposes only. Specifications subject to change without notice.

