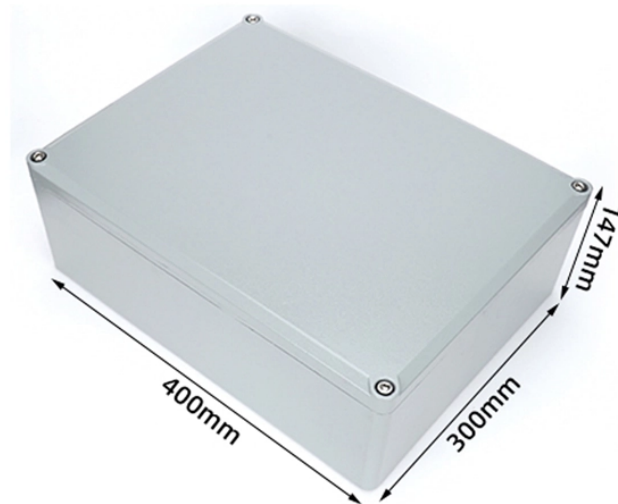


## What is a basic electrical distribution box



## What is a basic electrical distribution box



It receives power from the main electrical supply and divides it into separate circuits, each protected by circuit breakers or fuses. The primary purpose of a distribution box is to provide a safe ...



An electrical distribution box serves as a centralized unit for distributing electrical power within various structures, effectively managing and safeguarding the flow of electricity across multiple circuits.



The distribution box (DB box) helps safely and efficiently distribute electrical power. Today, electrical systems are essential for homes and industries. But what exactly is a power ...



At its core, an electrical distribution box (or distribution board) is a metal or plastic enclosure that houses various components responsible for managing and distributing electricity ...



What is the distribution box? A distribution box, also known as a distribution panel or board, is a cabinet that holds electrical parts used to supply power to multiple circuits within a ...



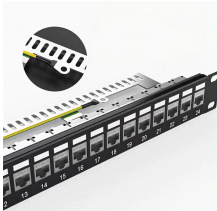
What are Distribution Boxes and Their Importance?  
What are Distribution Boxes and Their Importance?  
Distribution boxes, or electrical junction boxes as they are sometimes called, play ...



“A distribution box, also called a distribution panel or board, is a cabinet that contains electrical components used for the delivery of electricity to several circuits of a system.”



At its core, an electrical distribution box (or distribution board) is a metal or plastic enclosure that houses various components responsible for ...



A distribution box is used to receive electrical power from a main supply and distribute it to multiple branch circuits in a safe and controlled way. It helps protect circuits, organize electrical ...



A electrical distribution box acts as the central hub for managing electrical power, directing the main supply into subsidiary circuits equipped with protective devices like circuit breakers or fuses.



A power distribution box (also called PDU or distro) directs electricity from a main source to multiple circuits. It acts like a hub or traffic controller, managing power flow to different areas or ...

## Contact Us

For more information, pricing, or custom network solutions, please contact us:

Website: <https://www.hashherbcafe.co.za>

Email: [hello@hashherbcafe.co.za](mailto:hello@hashherbcafe.co.za)

Phone: +27 63 814 7295

Address: 15 Galaxy Road, Linbro Business Park, Johannesburg, 2065, South Africa

This document is for informational purposes only. Specifications subject to change without notice.

