

What is a PoE switch optical port



Overview

The SFP port on the PoE switch or PoE injector must be equipped with an SFP optical module and an optical fiber jumper to realize data transmission. While the RJ45 port can transport the data only through a CAT5E or CAT6 network cable. What is Power over Ethernet (PoE)?

Power over Ethernet (PoE) is technology that passes electric power and data over twisted-pair Ethernet cable to wireless access points, IP cameras, and VoIP phones. This eliminates the need for separate power adapters, reducing cable clutter and. Ethernet switch port types define the performance, scalability, and architecture of modern networks. This technology allows the network cables to carry electrical power to Wi-Fi access points, IP cameras, and other networked. The SFP port is an interface that realizes gigabit photoelectric signal conversion, and the maximum transmission rate can reach 1000Mbps (PROCET SFP port PoE switches and SFP PoE injectors support both 100 and 1000Mbps, self-adaptation).

What is a PoE switch optical port



A Power over Ethernet (PoE) pass-through switch is a special type of PoE switch that gets its power from an upstream PoE switch or injector and passes power to other PoE devices, ...



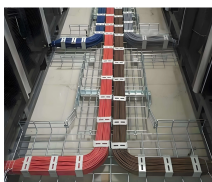
The PoE switch supplies power, the Ethernet cable carries both power and data, and the device receives everything through one connection. This is the most straightforward PoE ...



A PoE (Power over Ethernet) switch is a network switch that delivers both power and data through a single Ethernet cable to connected devices such as IP cameras, VoIP phones, wireless access ...



PoE ports supply power + data through one Ethernet cable.



In today's blog, we'll explain what a PoE switch is and how it powers devices through one Ethernet cable. We'll also look at the different types of PoE switches, their benefits, and how they can ...



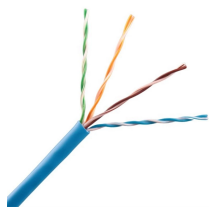
PoE switches can provide up to 15.4 watts per port, while PoE+ switches offer up to 25.5 watts. High-Power PoE, or PoE++, can deliver up to 51 watts per port. Adopting PoE ...



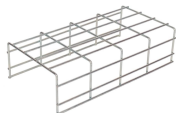
Fiber optic cable is used in a security camera system to link PoE switches together to the NVR when cabling lengths longer than 328ft are required. In the following walk-through video tutorial ...



In today's blog, we'll explain what a PoE switch is and how it powers devices through one Ethernet cable. We'll also look at the ...



Learn the key differences between LAN ports and PoE ports. Understand how they work, their advantages, and when to use a router or switch with PoE LAN ports for your network setup.



The SFP port on the PoE switch or PoE injector must be equipped with an SFP optical module and an optical fiber jumper to realize data transmission. While the RJ45 port can transport ...



Omnitron Power over Ethernet (PoE) switches enable distance extension over fiber optic cabling to network edge devices. They are available as unmanaged or managed switches.

Contact Us

For more information, pricing, or custom network solutions, please contact us:

Website: <https://www.hashherbcafe.co.za>

Email: hello@hashherbcafe.co.za

Phone: +27 63 814 7295

Address: 15 Galaxy Road, Linbro Business Park, Johannesburg, 2065, South Africa

This document is for informational purposes only. Specifications subject to change without notice.

