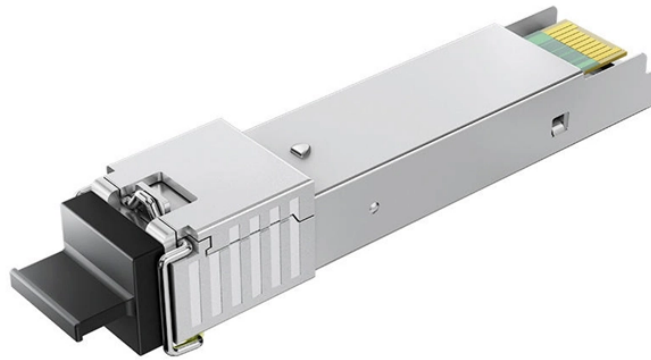


What are the types of relay protection settings



What are the types of relay protection settings



Correct relay settings are crucial for ensuring that protection systems work effectively. Major parameters like pickup current, time delays, and sensitivity must be optimized to balance fault ...



There are many types of protective relays, and each one is designed for a specific type of protection. Common types include overcurrent relay, differential relay, distance relay, earth fault ...




Microprocessor-based solid-state digital protection relays now emulate the original devices, as well as providing types of protection and supervision impractical with electromechanical relays.





There are many types of protective relay functions, but this presentation will focus on the most common type, basic overcurrent device 50/51 (instantaneous and time overcurrent).





Exploring types & functions of protection relays in power systems, emphasising importance of testing procedures for reliability & safety.

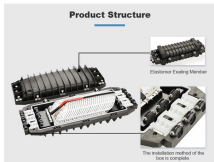
	<p>Learn about protective relays, their working principle, types, and applications in power systems. Discover how relays protect transformers, generators, and transmission lines from faults.</p>
---	--

	<p>This article covers various types of protective relays, such as overcurrent, directional, and differential relays, highlighting their operating characteristics and applications in electrical systems.</p>
---	--

	<p>Protective relays and devices have been developed over 100 years ago to provide “lastline”of defense for the electrical systems. They are intended to quickly identify a fault and isolate it so the balance of ...</p>
--	--

	<p>Learn the IEC standard for relay coordination in power systems. This detailed guide covers relay settings, coordination studies, IEC 60255 requirements, and best practices for protection ...</p>
---	---

	<p>There are different types of relays available and each type is used based on the requirement. So this article discusses an overview of a protective relay or ...</p>
---	---

	<p>Types of protection relays are mainly based on their characteristic, logic, on actuating parameter and operation mechanism. Protective relays can be categorized based on their operating ...</p>
---	--

Contact Us

For more information, pricing, or custom network solutions, please contact us:

Website: <https://www.hashherbcafe.co.za>

Email: hello@hashherbcafe.co.za

Phone: +27 63 814 7295

Address: 15 Galaxy Road, Linbro Business Park, Johannesburg, 2065, South Africa

This document is for informational purposes only. Specifications subject to change without notice.

