

## What are the tax rates when quoting prices for distribution boxes



### Overview

For a list of your current and historical rates, go to the California City & County Sales & Use Tax Rates webpage. The sales and use tax rates vary depending on your retail location. 25 percent is applied statewide. 25% statewide sales tax rate layered with county, city, and district taxes that push combined rates as high as 10. Here's what this. This tool does not constitute legal, tax, customs, or professional advice of any kind, and Flexport is not acting as your customs broker, attorney, or advisor through the provision of this service.



## What are the tax rates when quoting prices for distribution boxes



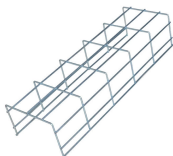
The following files are provided to download tax rates for California Cities and Counties (all have 3 digits after the decimal). Please Note: Some communities located within a county or a city may not be listed.



The 7.25% state base rate applies everywhere, but counties, cities, and special districts add their own local sales tax rates on top — meaning the combined rate can vary significantly by ...



For a list of your current and historical rates, go to the California City & County Sales & Use Tax Rates webpage. Look up the current sales and use tax rate by address. Please note, ...



California has state sales tax of 6%, and allows local governments to collect a local option sales tax of up to 3.5%. There are a total of 483 local tax jurisdictions across the state, collecting an average ...



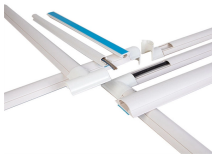
The 7.25% state base rate applies everywhere, but counties, cities, ...



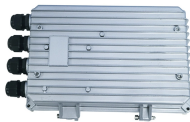
Type an address above and click "Search" to find the sales and use tax rate for that location. All fields required. Please ensure the address information you input is the address you intended. The tax rate ...



The sale and use of nonreturnable containers such as bags, wrapping paper, boxes, tapes, etc., are exempt from sales and use tax when those items are sold to a person who places the contents in the ...



We'll explain things like the difference between the Santa Clara County sales tax rate and the sales tax rates in individual cities in the county, how to calculate sales tax in San Jose, and help ...



Calculate customs fees, taxes & duties by HTS code. Real-time rates for 195+ countries. Trusted by 10,000+ businesses. Start now →.



To find the current sales and use tax rate for a specific location, you may use the Find a Sales and Use Tax Rate webpage to look up a tax rate by address. On the California City & County Sales & Use ...



Visit our California City and County Sales and Use Tax Rates guide to find the most current tax rate for any jurisdiction in California. You can look up a tax rate by address

## Contact Us

For more information, pricing, or custom network solutions, please contact us:

Website: <https://www.hashherbcafe.co.za>

Email: [hello@hashherbcafe.co.za](mailto:hello@hashherbcafe.co.za)

Phone: +27 63 814 7295

Address: 15 Galaxy Road, Linbro Business Park, Johannesburg, 2065, South Africa

This document is for informational purposes only. Specifications subject to change without notice.

