

What are the protective components of relay protection



What are the protective components of relay protection



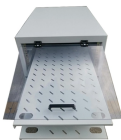
wer system is protected. The factors affecting the choice of protection are type and rating of equipment, location of the equipment, types of funks, abno. mal conditions and cost. The protective relaying is ...



The key components—transducers, protective relays, and circuit breakers—work together to detect, process, and respond to abnormal conditions such as short circuits, overloads, or open circuits.



There are different types of relays available and each type is used based on the requirement. So this article discusses an overview of a protective relay or protection relay - working with applications.



A protection relay is a crucial component of electrical systems that safeguard infrastructure, employees, and equipment from electric problems and malfunctions. It functions as a ...



Protective relays work in conjunction with various electrical protection and control devices, such as Miniature Circuit Breakers (MCBs) and Molded Case Circuit Breakers (MCCBs), to ...



Protective relays and devices have been developed over 100 years ago to provide “lastline” of defense for the electrical systems. They are intended to quickly identify a fault and isolate it so the balance of ...



Electromechanical protective relays at a hydroelectric generating plant. The relays are in round glass cases. The rectangular devices are test connection blocks, used for testing and isolation of ...



What are the essential components of a protective relay? What are the essential components of a protective relay? The essential components of a protective relay ...



Traditionally, protective relays were electromechanical devices that utilized induction disk, coils, contacts, and solenoid elements to determine protective characteristics.



Feb 24, 2012· Protective relays can be categorized based on their operating mechanisms into electromagnetic relay, static, and mechanical types. ...



Protective relays can be categorized based on their operating mechanisms into electromagnetic relay, static, and mechanical types. Actually, a relay is nothing but a combination of ...



Learn about protective relays, their working principle, types, and applications in power systems. Discover how relays protect transformers, generators, and transmission lines from faults.

Contact Us

For more information, pricing, or custom network solutions, please contact us:

Website: <https://www.hashherbcafe.co.za>

Email: hello@hashherbcafe.co.za

Phone: +27 63 814 7295

Address: 15 Galaxy Road, Linbro Business Park, Johannesburg, 2065, South Africa

This document is for informational purposes only. Specifications subject to change without notice.

