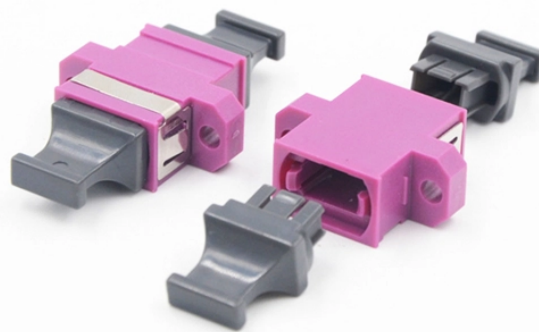


What are the modules in an industrial switch



Overview

Most industrial IP switches accept SFP modules that comply with IEEE transceiver specifications for the relevant Ethernet speed. In practice, you will see modules marketed as SR (multimode), LR (single-mode long), and sometimes ER (extended reach) depending on the line card. This article helps field engineers, integrators, and plant network. Cisco® Catalyst® 9200 Series switches extend the power of intent-based networking and Catalyst 9000 hardware and software innovation to a broader set of deployments. With its family pedigree, Catalyst 9200 Series switches offer simplicity without compromise – it is secure, always on, and IT. Unlike commercial switches, industrial switches must confront harsh environments such as extreme temperatures, strong electromagnetic interference, and dust corrosion. Their design must balance stability, reliability, and scalability. These switches are especially useful in harsh industrial environments or highly complex networks that require high port density and the highest levels of availability and reliability. No. Advantech's industrial Ethernet solutions provide an abundance of product options including managed and unmanaged switches, Gigabit Ethernet switches, PoE switches (IEEE 802.

What are the modules in an industrial switch



Cisco Catalyst 9200 Series switch models are designed for stacking switches as a single virtual switch, enabling customers to have a single management plane and control plane for up to 384 access ports.



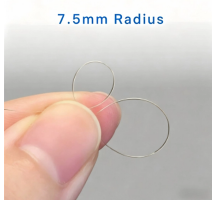
It comes in both fixed and modular designs supporting a wide variety of copper, fiber, and PoE expansion modules and is available with Layer 2 switching or Layer 3 routing firmware options to ...



The core value of industrial switches lies in their three key technical characteristics—environmental adaptability, reliability, and scalability—which directly determine their ...



This article introduces the types, forms, and connectors commonly used in industrial Ethernet switches, providing you with a clear understanding of their functionality and applications.



Designed for versatility, Modular Industrial Switches can be used in many different automation applications. These switches are especially useful in harsh industrial environments or highly complex ...



These modules let you customize the switch to your specific needs, allow you to accommodate future additions and changes, provide built-in scalability, and promote long-term viability and sustainability.



Compare Cisco industrial switches and choose the right model for factory networks, rugged edge deployments, PoE devices, and industrial Ethernet applications.



Unique tools such as a graphical active topology map and diagnostic dashboards provide users information to easily monitor and troubleshoot any industrial network.



Learn how to select SFP fiber modules for industrial IP switches, including wavelength, reach, DOM, temperature, and troubleshooting steps for HARTING ha-VIS deployments.



Advantech's industrial Ethernet solutions provide an abundance of product options including managed and unmanaged switches, Gigabit Ethernet switches, PoE switches (IEEE 802.3af and IEEE ...

Contact Us

For more information, pricing, or custom network solutions, please contact us:

Website: <https://www.hashherbcafe.co.za>

Email: hello@hashherbcafe.co.za

Phone: +27 63 814 7295

Address: 15 Galaxy Road, Linbro Business Park, Johannesburg, 2065, South Africa

This document is for informational purposes only. Specifications subject to change without notice.

