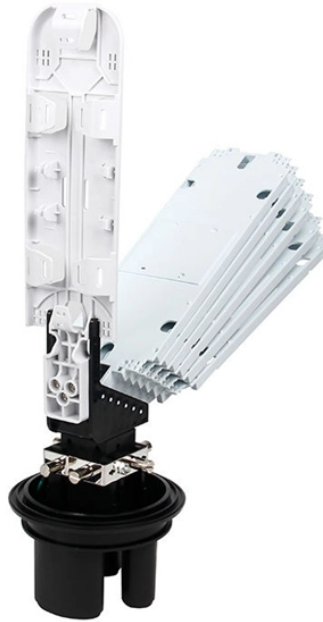


# What are the models of wavelength division multiplexing WDM equipment



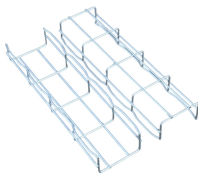
## Overview

Two types are available: integrated arrayed waveguide gratings (AWG), offering low cost, compact size, and precise ITU grid alignment; and discrete filter-based WDMs, providing greater flexibility to accommodate a wide range of wavelengths and fiber types. Wavelength Division Multiplexing (WDM) is a technique in fiber-optic communication systems that enables multiple optical signals with different wavelengths to be combined, transmitted, and separated over a single optical fiber. But navigating the alphabet soup of CWDM, DWDM, MWDM, LWDM, and SWDM can be daunting. They are a cost effective method to expand the capacity of existing fiber optic cables. WDMs use current electronics and fibers and.

## What are the models of wavelength division multiplexing WDM equipment



By comparing CWDM vs DWDM vs MWDM vs LWDM vs SWDM, you can make an informed decision to ensure your network meets your data capacity, distance, and application ...



Overview Systems Coarse WDM Dense WDM Enhanced WDM Shortwave WDM Transceivers versus transponders See also



There are two types of wavelength division multiplexers. Dense wavelength division multiplexers (DWDM): These devices use optical (analog) multiplexing techniques to increase the carrying ...



WDM systems are divided into three different wavelength patterns: normal (WDM), coarse (CWDM) and dense (DWDM). Normal WDM (sometimes called BWDM) uses the two normal wavelengths 1310 ...



Section 10.1 addresses the operating principles of WDM, examines the functions of a generic WDM link, and discusses the internationally standardized spectral grids that designate ...



It details the two main standards: coarse WDM (CWDM), with few channels and wide spacing for applications like metropolitan networks, and dense WDM (DWDM), which uses many narrowly ...



At MEETOPTICS, you can find and compare Wavelength Division Multiplexers (WDMs) for combining or splitting light at two different wavelengths. MEETOPTICS offers a variety of multiplexers with ...



Wavelength Division Multiplexing (WDM) stands out as a cornerstone, enabling multiple data streams to travel simultaneously over a single fiber. This guide delves into the principles, types, ...



There are two main types of WDM modules, Coarse Wavelength Division Multiplexing (CWDM) and Dense Wavelength Division Multiplexing (DWDM). 1.



By comparing CWDM vs DWDM vs MWDM vs LWDM vs SWDM, you can make an informed decision to ensure your network meets your data capacity, ...



Wavelength Division Multiplexing (WDM) stands out as a cornerstone, enabling multiple data streams to travel simultaneously over a single fiber. This ...



We produce fiber-coupled Wavelength-Division Multiplexing (WDM) devices that combine (Mux) or separate (DeMux) multiple wavelength channels into or from a single optical fiber. Two types are ...



According to the different channel spacing, WDM can be subdivided into CWDM (coarse wavelength division multiplexing) and DWDM (dense wavelength division multiplexing).

## Contact Us

For more information, pricing, or custom network solutions, please contact us:

Website: <https://www.hashherbcafe.co.za>

Email: [hello@hashherbcafe.co.za](mailto:hello@hashherbcafe.co.za)

Phone: +27 63 814 7295

Address: 15 Galaxy Road, Linbro Business Park, Johannesburg, 2065, South Africa

This document is for informational purposes only. Specifications subject to change without notice.

