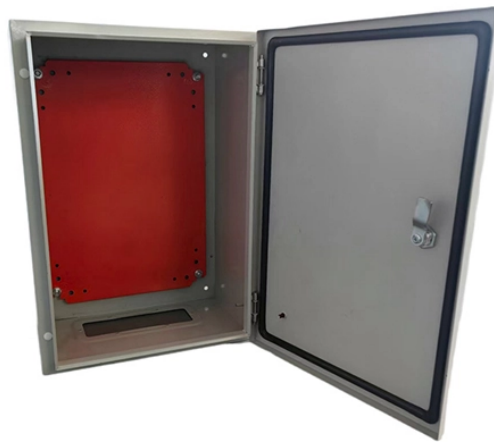


What are the connection methods between the PON port and the optical splitter



Overview

The OLT is connected to the optical splitter through a single optical fiber, and then the optical splitter connects to ONUs/ONTs. GPON adopts WDM to transmit data of different upstream/downstream wavelengths over the same ODN. This guide focuses on two critical aspects of optical splitters that define FTTH performance: split ratios (how signals are divided) and splitting architectures (how splitters are deployed). By understanding these elements, network operators can design PON (Passive Optical Network) systems that. According to the Broadband Forum, PLC splitters are essential for achieving scalable and cost-effective GPON and XGS-PON deployment in access networks. 1x32 splits were common in North America for G-PON architectures.

What are the connection methods between the PON port and the op



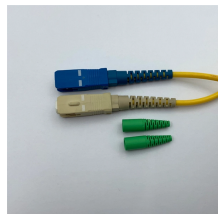
In this guide, you'll learn how fiber splitters function in PON networks, the difference between PLC and FBT types, and how to choose the best model for your rollout in 2025.



In the daily FTTH construction, the PON network structure can be designed as centralized splitting (one-level) and cascaded splittings (two-level or more) according to the structure of the ...



This foundational document explores how splitter architecture choices impact fiber counts, splicing, and customer connections while setting the stage for a more detailed follow-up analysis of...



explains how optical splitters enable FTTH, their types (FBT vs. PLC), key ratios, and how they integrate with LINK-PP optical modules for a seamless network.



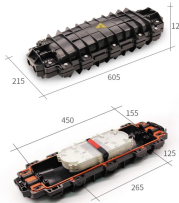
The passive optical splitter is essential for splitting a single Point-to-Multi-Point (P2MP) physical fiber network. By connecting with OLT and ONU, the fiber splitter can achieve split ratios of ...



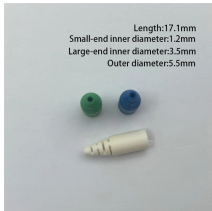
In the CO or head end, the OLT (optical line terminal) has a port that connects to a single fiber, transmitting data bidirectionally at different wavelengths to a splitter which connects to the ONT ...



This foundational document explores how splitter architecture choices impact fiber counts, splicing, and customer connections while setting the stage for ...



The OLT is connected to the optical splitter through a single optical fiber, and then the optical splitter connects to ONUs/ONTs. GPON adopts WDM to transmit data of different ...



explains how optical splitters enable FTTH, their types (FBT vs. PLC), key ratios, and how they integrate with LINK-PP optical modules for a seamless ...



Learn about optical splitter split ratios (1:N, 2:N), centralized vs. cascaded architectures, and how to choose the right setup for FTTH PON networks.



These various methods can be mixed in a network to best meet the performance and cost requirements for the network. The next document to be published on this topic will be a more comprehensive look ...



Passive Optical Networks (PON) have become the backbone of high-speed fiber-to-the-home (FTTH) solutions. Network designers and ISPs aiming for efficiency must focus on effective ...

Contact Us

For more information, pricing, or custom network solutions, please contact us:

Website: <https://www.hashherbcafe.co.za>

Email: hello@hashherbcafe.co.za

Phone: +27 63 814 7295

Address: 15 Galaxy Road, Linbro Business Park, Johannesburg, 2065, South Africa

This document is for informational purposes only. Specifications subject to change without notice.

