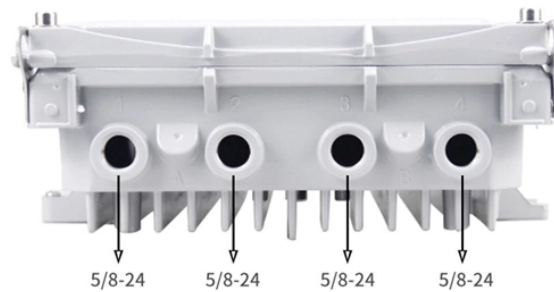


What are the characteristics of wavelength division multiplexing WDM



What are the characteristics of wavelength division multiplexing WDM



The light sources used in high-capacity optical fiber communication systems emit in a narrow wavelength band of less than 1 nm, so many different independent optical channels can be used ...



Wavelength-division multiplexing (WDM) is defined as a technology that multiplexes multiple optical carrier signals onto an optical fiber by using different wavelengths of laser light, enabling bidirectional ...



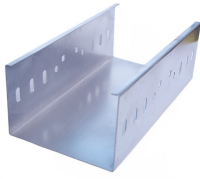
Wavelength Division Multiplexing achieves its capacity increase by exploiting a physical property of light: different wavelengths, or colors, can travel through the same medium independently.



Wavelength Division Multiplexing (WDM) is a fiber optic transmission technique that combines multiple optical signals at different wavelengths into a single fiber, significantly increasing ...



WDM systems are divided into three different wavelength patterns: normal (WDM), coarse (CWDM) and dense (DWDM). Normal WDM (sometimes called BWDM) uses the two normal wavelengths 1310 ...



The evolution of WDM technology can alleviate fiber exhaust, by requiring fewer fibers to transmit and receive multiple services. By utilizing more wavelengths, the potential bandwidth capacity of a single ...



Wavelength Division Multiplexing (WDM) is a technique in fiber-optic communication systems that enables multiple optical signals with different wavelengths to be combined, transmitted, and ...



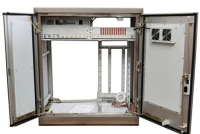
Wavelength division multiplexing (WDM) is a technology for increasing the transmission capacity of optical fiber communications by sending multiple data channels simultaneously through a single fiber, ...



What is Wavelength Division Multiplexing (WDM)? WDM is a technology that enables multiple optical signals to be transmitted over a single fiber optic cable, significantly increasing the ...



Wavelength Division Multiplexing (WDM) is a fiber optic transmission technique that combines multiple optical signals at different wavelengths into a ...



Explore the fundamentals of Wavelength Division Multiplexing (WDM), its types, benefits, challenges, and future prospects in our detailed guide.

Contact Us

For more information, pricing, or custom network solutions, please contact us:

Website: <https://www.hashherbcafe.co.za>

Email: hello@hashherbcafe.co.za

Phone: +27 63 814 7295

Address: 15 Galaxy Road, Linbro Business Park, Johannesburg, 2065, South Africa

This document is for informational purposes only. Specifications subject to change without notice.

