

## What are integrated protection and relay protection systems



### Overview

A comprehensive protection relay (or integrated protection relay) is a smart electrical device that combines multiple protection functions to monitor power systems (e., generators, transformers, motors, transmission lines) and quickly isolate faults to ensure safety. It features modular. Power System Protection Definition: Power system protection is defined as the methods and technologies used to detect and isolate faults in an electrical power system to prevent damage to other parts of the system. : 4 The first protective relays were electromagnetic devices, relying on coils operating on moving parts to provide detection of abnormal operating conditions such as. Combines protection, sensors, control power, and circuit breaker in a single package Typically added to a breaker close circuit to prevent accidental reclosure after a trip. Three fundamental components required for each circuit breaker. They are intended to quickly identify a fault and isolate it so the balance of the system continue to run under normal conditions. The selection and applications of. Numerical relays are based on the use of microprocessors.

## What are integrated protection and relay protection systems



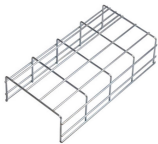
To address these shortcomings, this paper proposes a new approach based on the XGBoost algorithm, which is expected to solve the integration and coordination problems of relay protection systems in ...



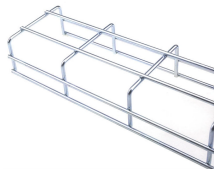
Numerical relays are based on the use of microprocessors. The first numerical relays were released in 1985. A big difference between conventional electromechanical and static relays is how the relays ...



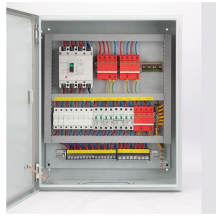
They are intended to quickly identify a fault and isolate it so the balance of the system continue to run under normal conditions. The selection and applications of protective relays and their associated ...



Siemens' universal protection relays portfolio includes products such as SIPROTEC 7SX800 and 7SX85 to provide flexibility and cost savings. Our devices cover a wide range of applications and offer ...



You will also gain a solid appreciation of how the modern relay communicates not only to the central SCADA system but also between themselves, resulting in a truly multifunctional system which ...



Abstract - This paper discusses Integrated Protection and Control solution for medium size generators (typical machine size around 50MW) to be applied in petroleum and chemical industry utilizing ...



Learn about protective relays, their working principle, types, and applications in power systems. Discover how relays protect transformers, generators, and transmission lines from faults.



A comprehensive protection relay (or integrated protection relay) is a smart electrical device that combines multiple protection functions to monitor power systems (e.g., generators, transformers, ...



This paper reports on the development of integrated protection for power system. The concept of integrated protection is introduced, in which a centralized protection system (or relay) provides the ...



A protection relay is a crucial component of electrical systems that safeguard infrastructure, employees, and equipment from electric problems and ...



Provides protection, logic, and metering. All-in-one solution. Combines protection, sensors, control power, and circuit breaker in a single package. Typically added to a breaker close circuit to prevent ...



Microprocessor-based solid-state digital protection relays now emulate the original devices, as well as providing types of protection and supervision impractical with electromechanical relays.



Let's have a discussion on basic concept of protection system in power system and coordination of protection relays. In the picture the basic connection of protection relay has been shown.

## Contact Us

For more information, pricing, or custom network solutions, please contact us:

Website: <https://www.hashherbcafe.co.za>

Email: [hello@hashherbcafe.co.za](mailto:hello@hashherbcafe.co.za)

Phone: +27 63 814 7295

Address: 15 Galaxy Road, Linbro Business Park, Johannesburg, 2065, South Africa

This document is for informational purposes only. Specifications subject to change without notice.

