

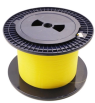
Western European custom-made mesh cable tray manufacturer



Western European custom-made mesh cable tray manufacturer



Spina Group offers a complete range of wire mesh cable trays designed for versatility and reliability in modern electrical and instrumentation installations. The metal mesh tray system is ideal for ...



Germany boasts a diverse landscape of cable tray manufacturers, ranging from established global players, renowned for innovation and quality, to specialized firms that offer best ...



We manufacture metallic cable tray systems in the following types: solid bottom cable trays (perforated and closed), ladder trays and mesh trays, in different structural dimensions and material qualities.



Trayco is specialised in producing and optimising 100% Belgian cable trays, mesh trays, cable ladders, mounting and floor systems. We also play an important role as advisor and guide during the ...



These are cable management systems composed of trays, mounting support systems, direction changing parts, connection parts and fittings with the purpose of carrying and fixing cables safely in ...

Waterproof and dustproof, reliable and safe
The outer classic sink design allows the sealing ring of the cabinet and door to be seamlessly compressed without leaving a trace of gaps.



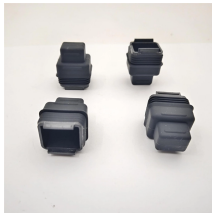
We specialize in manufacturing wire mesh cable trays, supports, and accessories. Our expertise and experience have allowed us to accumulate valuable technical knowledge, which is reflected in the ...



We manufacture spot-welded wire mesh according to your specifications and requirements. WDM Deutenberg is a manufacturer of industrial special meshes tailored to your individual customer needs...



DKC is a European leader, and offers a comprehensive range of cable tray systems and energy protection, transport and distribution solutions for civil and industrial infrastructures.



Wire mesh cable trays provide a quick solution to supporting large quantities of cables in data centers, network equipment rooms and places where there is complex machinery. Our wire mesh cable trays ...

Contact Us

For more information, pricing, or custom network solutions, please contact us:

Website: <https://www.hashherbcafe.co.za>

Email: hello@hashherbcafe.co.za

Phone: +27 63 814 7295

Address: 15 Galaxy Road, Linbro Business Park, Johannesburg, 2065, South Africa

This document is for informational purposes only. Specifications subject to change without notice.

