

Wavelength Division Multiplexing WDM Fiber Optic Communication System



Wavelength Division Multiplexing WDM Fiber Optic Communication



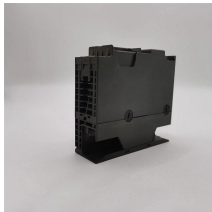
What is Wavelength Division Multiplexing (WDM)?
Wavelength Division Multiplexing (WDM) is a technique in fiber-optic communication systems that enables multiple optical signals with different ...



The implementation and application of Wavelength Division Multiplexing (WDM) technology revolutionizes the capacity and efficiency of fiber optic networks, enabling simultaneous ...



Within large data center environments, WDM is used to create high-speed links between network switches, ensuring rapid data transfer across the internal network architecture. By enabling ...



Wavelength Division Multiplexing (WDM) is a multiplexing and transmission scheme in fiber-optical telecommunications where different wavelengths, emitted by several lasers, each carry dedicated ...



Wavelength Division Multiplexing (WDM) is a fiber optic transmission technique that combines multiple optical signals at different wavelengths into a single fiber, significantly increasing ...



The light sources used in high-capacity optical fiber communication systems emit in a narrow wavelength band of less than 1 nm, so many different independent optical channels can be used ...



WDM Multiplexers and Demultiplexers combine and separate different wavelengths (colors) of light signals on a common fiber connection. This WDM technology can significantly increase the capacity ...



Wavelength division multiplexing (WDM) is a technology for increasing the transmission capacity of optical fiber communications by sending multiple data channels simultaneously through a single fiber, ...



This paper discusses in detail the wavelength division multiplexing (WDM) technology, which effectively increases the communication capacity and transmission sp



In fiber-optic communications, wavelength-division multiplexing (WDM) is a technology which multiplexes a number of optical carrier signals onto a single optical fiber by using different ...

Contact Us

For more information, pricing, or custom network solutions, please contact us:

Website: <https://www.hashherbcafe.co.za>

Email: hello@hashherbcafe.co.za

Phone: +27 63 814 7295

Address: 15 Galaxy Road, Linbro Business Park, Johannesburg, 2065, South Africa

This document is for informational purposes only. Specifications subject to change without notice.

