

W341 Optocoupler Diode



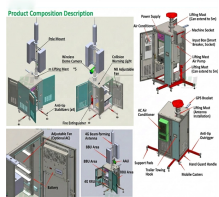
W341 Optocoupler Diode



The ACPL-P341/W341 contains an AlGaAs LED, which is optically coupled to an integrated circuit with a power output stage. This optocoupler is ideally suited for driving power IGBTs and MOSFETs used in ...



BROADCOM (AVAGO) ACPL-W341-560E | Optocoupler; SMD; Ch: 1; 5kV; SO6 - This product is available in Transfer Multisort Elektronik. Check out our wide range of products.



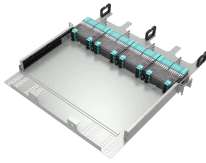
ACPL-W341-500E Broadcom / Avago MOSFET Output Optocouplers Gate Drive Opto datasheet, inventory, & pricing.



The ACPL-P341/W341 contains an AlGaAs LED, which is optically coupled to an ...



Part #: ACPL-W341. Description: 3.0 Amp Output Current IGBT Gate Drive Optocoupler with Rail-to-Rail. File Size: 276.52 Kbytes. Manufacturer: AVAGO TECHNOLOGIES LIMITED.



The isolated gate driver optocouplers are ideal for use in motor control and power conversion applications. This is a solution where the logic signals is isolated and protected from high voltages.



The ACPL-P341/W341 contains an AlGaAs LED, which is optically coupled to an integrated circuit with a power output stage. This optocoupler is ideally suited for ...



The ACPL-P341/W341 contains an AlGaAs LED, which is optically coupled to an integrated circuit with a power output stage. This optocoupler is ideally suited for driving power IGBTs and MOSFETs used in ...



ACPL-W341 is an manufactured by AVAGO. Download the ACPL-W341 datasheet to learn more about specifications, pins, packaging and other information.



The ACPL-P341/W341 contains an AlGaAs LED, which is optically coupled to an integrated circuit with a power output stage. This optocoupler is ideally suited for driving power IGBTs and MOSFETs used in ...



The ACPL-P341/W341 contains an AlGaAs LED, which is optically coupled to an integrated circuit with a power output stage. This optocoupler is ideally suited for driving power IGBTs and MOSFETs used in ...



The ACPL-P341/W341 contains an AlGaAs LED, which is optically coupled to an integrated circuit with a power output stage. This optocoupler is ideally suited for driving power IGBTs and MOSFETs used in ...

Contact Us

For more information, pricing, or custom network solutions, please contact us:

Website: <https://www.hashherbcafe.co.za>

Email: hello@hashherbcafe.co.za

Phone: +27 63 814 7295

Address: 15 Galaxy Road, Linbro Business Park, Johannesburg, 2065, South Africa

This document is for informational purposes only. Specifications subject to change without notice.

