

Vertical cable trays for low-voltage wiring need to be secured



Vertical cable trays for low-voltage wiring need to be secured



This guide covers the critical steps, from selecting the right electrical cable tray and performing accurate cable fill calculations to managing a safe cable pull through and ensuring all bonding and grounding ...



Solid bottom steel cable trays with solid covers and wrap around cover clamps can be used to provide EMI/RFI shielding protection for sensitive circuits.



Raceways, cable assemblies, and enclosures must be securely fastened in place [300.11 (A)]. You can't use ceiling-support wires or the ceiling grid to support raceways or cables [300.11 (B)]. Independent ...



The document provides installation guidelines for cable trays. It states that cable trays should be individually connected using bolted connections, and welded earthing conductors should be installed. ...



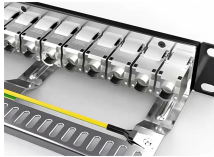
A bonding jumper, sized in accordance with Sec. 250.102 and installed in accordance with Sec. 250.96, must bond the sections of metal cable tray, or the cable tray and the raceway or ...



This article explains the main requirements and good practices for cable tray systems, including tray types, materials, loading, supports, bonding, cable selection, and installation details.



Cables and conductors must be secured to the cable tray at intervals according to installation instructions. For non-horizontal runs, cables should be fastened securely to transverse ...



(1) It is common practice to use cable trays in the vertical position. I have many photos of such installations. There is no problem. Cables must be fastened securely, see NEC 318-8 (b). (2) Yes, ...



The conductors shall be secured to the cable tray (s) at the transition, and they shall be protected, by guarding or by location, from physical damage.



The short answer is no. Due to their exposure to the open air because of the cable trays, the wires contained within need a very durable outer covering. The regulations dictate that the cables ...

Contact Us

For more information, pricing, or custom network solutions, please contact us:

Website: <https://www.hashherbcafe.co.za>

Email: hello@hashherbcafe.co.za

Phone: +27 63 814 7295

Address: 15 Galaxy Road, Linbro Business Park, Johannesburg, 2065, South Africa

This document is for informational purposes only. Specifications subject to change without notice.

