

Vertical Cable Tray Layout Scheme



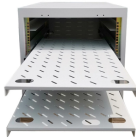
Vertical Cable Tray Layout Scheme



Tray-rated cables are required for cable tray installation, so using a channel cable tray system or wire mesh system for exits may be more convenient and economical.



Each tray section should be bonded to an adjoining section using listed bonding jumpers or a continuous ground wire and clamps (such as a copper ground bolt). Powder coated tray requires the removal of ...



By adhering to these principles, E& I cable tray layouts can achieve the essential balance of safety, efficiency, and durability. A well-planned layout not only meets present requirements but also adapts ...



Our wind certification report provides you with list of acceptable B-Line series cable tray supports, fittings and covers based off of the environmental conditions, cable loading, and type of cable tray in your ...



The cable tray system transition from a grated mesh design resting on unistrut support to a pre-manufactured cable tray ladder system. However, the various methods of installation observed in the ...



Vertical cable tray elbows at the top of runs should be supported at each end. At the bottom of runs, they should be supported at the top of the elbow and within 610 mm (24") of the lower extremity of the ...



Explore the essentials of cable tray layout and section design in electrical systems, ensuring optimal cable management and support.



These documents: ANSI/NEMA VE-1, Metal Cable Tray Systems; NEMA VE-2, Cable Tray Installation Guidelines; and NEMA FG-1, Non Metallic Cable Tray Systems, are an excellent industry resource in ...



Hubbell's NEXTFRAME® Ladder Tray is the effective and widely used cable runway that supports and delivers bundles of cable between cabinets, racks, and closets, along walls, and suspended from ...



Learn about effective Cable Tray Design and Layout for electrical systems. Our guide covers planning, material choice, safety, and maintenance.



Cable tray length is selected based on the load to be supported, the distance between the supports (also referred to as the span), and handling and installation constraints.

Contact Us

For more information, pricing, or custom network solutions, please contact us:

Website: <https://www.hashherbcafe.co.za>

Email: hello@hashherbcafe.co.za

Phone: +27 63 814 7295

Address: 15 Galaxy Road, Linbro Business Park, Johannesburg, 2065, South Africa

This document is for informational purposes only. Specifications subject to change without notice.

