

Unit Distribution Box Switch Model and Specifications



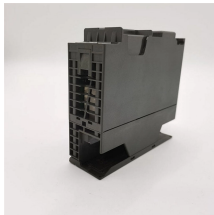
Unit Distribution Box Switch Model and Specifications



Distribution Units have combinations of four, five or six outlets together with neon indicator, fuse and switch options. The three sizes are available in various combinations and, other than the compact ...



Our innovative power distribution units and rack PDUs not only maintain power, but they also enable us to support you in any challenges your IT infrastructure might face.



EVO experience along with our industry partners, allows us to design, manufacture, and supply most any type of military or commercial power distribution panel/unit ...



HVL switchgear is a reliable power distribution product with field installations spanning over 60 years that permits trip/close operations of high power distribution switchboards.



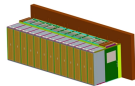
Output/distribution specifications ... PowerView metering and monitoring ... Communication interfaces ... Optional - add ons



EVO experience along with our industry partners, allows us to design, manufacture, and supply most any type of military or commercial power distribution panel/unit and transfer switches for mobile and ...



In addition to the load-dropping ratings shown, the switch is capable of interrupting transformer magnetizing currents associated with the applicable loads as well as line-charging and cable ...



Maximize your data center rack space with our basic PDU offering. It has a compact design and high outlet density, while also offering flexible mounting options and efficient power distribution.



The Eaton line of three-phase power distribution units (PDUs) provide robust power distribution that can be easily tailored to meet the design specifications of any facility or data center. The PDU offers ...



This specification covers the design manufacture, shop testing, loading, transportation and delivery at sub-station site of 33KV, 400Amp, 3Pole & 11KV, 400Amp, 3Pole H.G. Fuse Sets for outdoor ...



Features Includes painted steel enclosure Contains 2 x PAC1600 energy meter Pre-wired with all necessary cabling for out-of the box installation to DBs Dual power tail connections provided Meter ...

Contact Us

For more information, pricing, or custom network solutions, please contact us:

Website: <https://www.hashherbcafe.co.za>

Email: hello@hashherbcafe.co.za

Phone: +27 63 814 7295

Address: 15 Galaxy Road, Linbro Business Park, Johannesburg, 2065, South Africa

This document is for informational purposes only. Specifications subject to change without notice.

