

Under which trademark category does fiber optic connector belong



Overview

Trademark Class 38 pertains to services allowing at least one person to communicate with another by a sensory means. gov account for a better search experience. Logging in using the Sign in link in the top right corner helps you avoid errors when the system is. Where such a trademark is placed on a label in conjunction with the required information, the generic name of the fiber must appear in immediate conjunction therewith, and such trademark and generic name must appear in type or lettering of equal size and conspicuousness. (d) Where a generic name or. About 100 fiber-optic connector types have been introduced in today's market, but only a small subset is common in modern networks. Each type is optimized for specific uses and includes features suitable for different devices. In this post, we comprehensively cover the services which fall under Class 38 of trademark classification. Developed by the World Customs Organization (WCO), it is used by more than 200 countries as a basis for their customs tariffs and for the collection of international trade. A fiber optic connector is a mechanical device used to align and join optical fibers, enabling light to pass through with minimal loss.

Under which trademark category does fiber optic connector belong



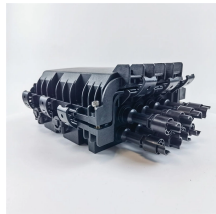
A comprehensive guide to Class 38 of the Trademark Filing Classification. Trademarks must be applied or registered under classes and each class represents a distinct class of goods or ...



A search you complete before applying for a trademark registration to make sure your trademark is available to register for your particular goods or services, and to make sure that no ...



(c) A non-deceptive fiber trademark may be used on a label in conjunction with the generic name of the fiber to which it relates.



Optical Fibers and Cables: Optical fibers, unassembled or not attached to connectors, are generally classified under HS Code 9001.10. This ...



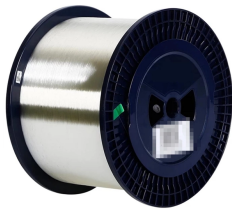
Pasting a link using, without permission, a registered trademark such as a logo or company mark retained by the Company is not allowed. Pasting a link in a form where the origin of information is ...



In this blog post, we will explain what each trademark class covers and give you some examples of goods or services that belong to each class. This will help you to select the best class or classes for ...



A fiber connector is a precise coupling device to join fiber cables quickly. This guide introduces LC, SC, FC, ST, MPO, CS and many others.



Optical Fibers and Cables: Optical fibers, unassembled or not attached to connectors, are generally classified under HS Code 9001.10. This category includes optical fiber bundles or ...



MTP is a registered trademark used for an MPO-style connector design from US Conec; MTP connectors are MPO-compatible, but “MTP” is a brand/trademark term. These components ...



Hardened Fiber Optic Connectors (HFOCs) and Hardened Fiber Optic Adapters (HFOAs) are passive telecommunications components used in an outside plant environment.



Discover the common fiber connector types. Learn the differences, uses, and best practices for SC, LC, ST, FC, MPO/MTP connectors.

Contact Us

For more information, pricing, or custom network solutions, please contact us:

Website: <https://www.hashherbcafe.co.za>

Email: hello@hashherbcafe.co.za

Phone: +27 63 814 7295

Address: 15 Galaxy Road, Linbro Business Park, Johannesburg, 2065, South Africa

This document is for informational purposes only. Specifications subject to change without notice.

