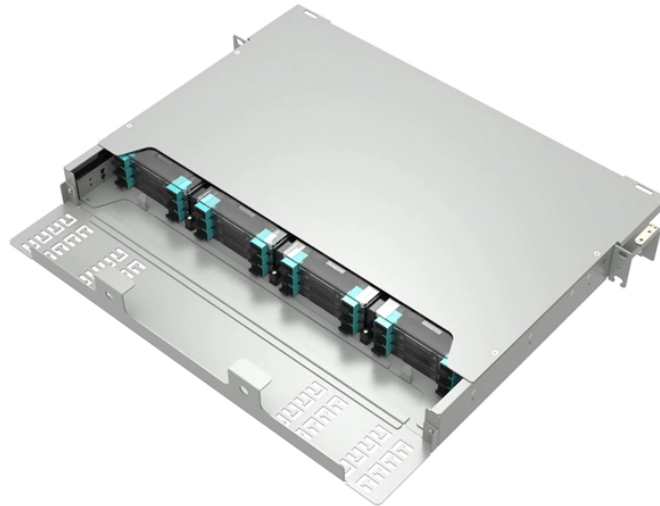


## Ukrainian Cable Tray Expansion Joints



### Overview

: Bonding Jumpers are required and are sold separately. Parts CE, CH, and CV to be bonded if used as equipment grounding conductor. Heavy Duty, Mid Span Splice Plates available upon request. 1993 NEC Section 300-7 (b) states that "Raceways shall be provided with expansion joints where necessary to compensate for the thermal expansion or contraction. This subject. Expansion splice plates for Ladder or Trough are designed to allow 1-1/2" free movement between adjacent straight lengths. In applications where there is a large temperature differential over the year, expansion plates are required with appropriate gap setting as per NEMA guidelines to ensure the long-term integrity. Your partner for electrical engineering solutions and power supply across Ukraine. These three qualities make the Cablofil Wiremesh Cable Tray system preferred by installers.

## Ukrainian Cable Tray Expansion Joints



It is important that cable tray installations incorporate features which provide adequate compensation for their thermal contraction and expansion. The length of the continuous cable tray straight run, and the ...



Discover best practices for cable tray expansion joint installation to accommodate thermal changes, ensuring structural integrity and compliance with NEC and NEMA standards.



NEMA standards provide guidelines for placement of expansion joints based on expected temperature ranges and material type. Expansion joints should be installed at regular intervals and allow the ...



These three qualities make the Cablofil Wiremesh Cable Tray system preferred by installers.



E-Line KME cable ladders have high load-bearing capacity and are designed for vertical cable installation inside and outside industrial facilities and buildings.



NEMA has a free PDF installation guide that gives you the information needed to calculate how many expansion joints are needed. The code never tells you that you need one every so many ...



Bending radii of special pieces take into consideration the CEI 11-17 standard, which settles the minimum bending radius according to cable's diameter; on request, we can supply different bending ...



The cable tray needs to be anchored at the support closest to the midpoint between the expansion joints with hold down clamps and secured by expansion guides at all other support locations.



Cope expansion connector allows secure cable tray expansion. Sold in pairs with all hardware.



This dropout is used at the end of a cable tray system, or to provide a smooth drop off for small cables or any point between the rungs in the ladder system. It can be used in pairs, where dropping cable from ...

## Contact Us

For more information, pricing, or custom network solutions, please contact us:

Website: <https://www.hashherbcafe.co.za>

Email: [hello@hashherbcafe.co.za](mailto:hello@hashherbcafe.co.za)

Phone: +27 63 814 7295

Address: 15 Galaxy Road, Linbro Business Park, Johannesburg, 2065, South Africa

This document is for informational purposes only. Specifications subject to change without notice.

