

# Tubular Busbar Processing Machine



## Tubular Busbar Processing Machine



Busbar Machinery Corporation is the world's leading source of high performance machines for punching & cutting bending & embossing of the copper/aluminum busbars.



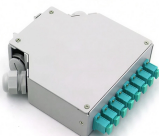
Discover the four types of busbar processing machines, from manual to fully automated solutions. Explore their scenarios and applications in the industry for efficient busbar processing.



With 300+ moulds available for customized tooling and a robust painted-steel frame housing hardened dies and punches, this machine is engineered for repetitive, high-volume busbar fabrication.



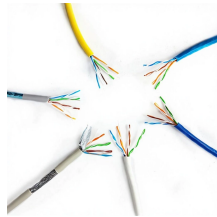
For 20 years, MAC™ has focused on the research and development and production of busbar processing machine, including busbar bending, punching and cutting. Our products cover CNC ...



At EHRT, we provide businesses of all sizes with the latest in copper busbar, aluminum busbar and steel bar fabrication equipment. Our busbar punching machines and busbar bending machines feature ...



Shandong Bolt delivers CNC busbar machines & hydraulic tools to 30+ countries—ISO/CE/RoHS certified, trusted by global electrical and industrial pros.



Our automated machines for machining busbars simplify and speed up the interior installation of controlgear and switchgear in manufacturing. This allows the fast, precise and flexible punching and ...



LT Machinery provides a complete set of solutions for punching, cutting, bending, and turret processing of copper and aluminum busbars. This equipment can serve the entire process of busbar processing ...



We offer a complete range of solutions—from standard machines to advanced custom systems—establishing us as your trusted partner for busbar processing equipment.



Reliable, accurate and versatile hydraulic busbar cutting, punching and bending machines designed for on-the-job site and in-plant production.

## Contact Us

For more information, pricing, or custom network solutions, please contact us:

Website: <https://www.hashherbcafe.co.za>

Email: [hello@hashherbcafe.co.za](mailto:hello@hashherbcafe.co.za)

Phone: +27 63 814 7295

Address: 15 Galaxy Road, Linbro Business Park, Johannesburg, 2065, South Africa

This document is for informational purposes only. Specifications subject to change without notice.

