

Tube-type busbar fixing clamp



Tube-type busbar fixing clamp



Manufacturer of custom and standard electrical connectors for power distribution, grounding, bonding, underground and substation applications, and insulated connectors. Specializes ...



Kaerda utilizes specialized formulations of BMC and SMC, designed to deliver exceptional mechanical strength to securely hold busbars, especially under electromechanical stress from short-circuit ...



Download by Google on the App Store. See screenshots, ratings and reviews, user tips, and more apps like .



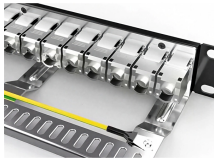
. 108,974,819 likes · 91,112 talking about this. The latest and greatest music videos, trends and channels from .



Explore and share videos, music, and more on , the leading platform for online video streaming and sharing.



The manufacturing of GRL busbar systems is a perfect blend of precision engineering, high-quality materials, and superior structural design. Our goal is to build an efficient, safe, and reliable ...



That site's owner, Universal Tube & Rollform Equipment (Universal Tube), filed a lawsuit against in November 2006, after being regularly overloaded by people looking for .



Learn how to create your own.



Each bus bar connector is engineered to ensure a secure and durable connection, making them the ideal choice for infrastructure requiring consistent operational integrity.



The Tube Council offers the opportunity to meet and learn from other industry experts. We develop the idea that tubes should be the packaging of choice for consumers.



Enjoy your favorite videos and channels with the official app.



These high-quality clamps are designed to securely hold busbars in place, preventing movement, reducing the risk of electrical faults, and enhancing overall system integrity.



Clamping Capacity: 20 mm. Clamping capacity is calculated using the included screws. Maximum clamping capacity is 50 mm (1.97") using longer 8.8 class screws.



MGT type T-connectors are used to fix or hang busbars on insulators at the substation, including rectangular channel, tube bus and cable supports in accordance with bus type.



Busbar Clamp to connect nVent ERIFLEX Flexibar to copper punched busbar without drilling.



Tube bus bar corona ball is used to prevent corona at tube bus terminal. P.S.: Custom made is available according to different requirement. Request For Quotation. You can get the price list and we will ...



Watch free on Tubi. From deep cuts to hit movies, shows, series, live TV and awarded originals. No subscription. Free forever.



Explore our official blog for the latest news about , creator and artist profiles, culture and trends analyses, and behind-the-scenes insights.



Kids provides a more contained environment for kids to explore and makes it easier for parents and caregivers to guide their journey.

Contact Us

For more information, pricing, or custom network solutions, please contact us:

Website: <https://www.hashherbcafe.co.za>

Email: hello@hashherbcafe.co.za

Phone: +27 63 814 7295

Address: 15 Galaxy Road, Linbro Business Park, Johannesburg, 2065, South Africa

This document is for informational purposes only. Specifications subject to change without notice.

