

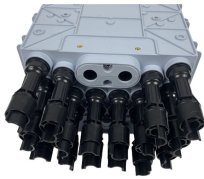
Trough-type fireproof cable tray ladder-type galvanized cable tray



Trough-type fireproof cable tray ladder-type galvanized cable tray



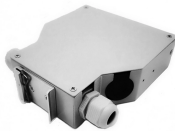
Husky Ladder Cable Tray systems consists of two longitudinal side members connected by individual transverse members, and is designed for use as a power cable or control cable support system.



We have a better understanding of the differences between fire-resistant cable trays and ordinary trays, which will make it easier for people to choose fire-resistant cable trays and pneumatic ball valves.



We Jiangsu Holdee electric Co., Ltd can provide customers with ...



Chalfant Ladder Cable Tray Systems are ideal for indoor and outdoor cable management. They provide reliability, ease of installation, and cost savings both initially and long term.



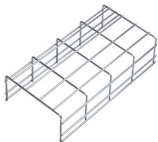
Ventilated Or Perforated Trough Type 50-200mm Side Rail Height According To Size Max. Working Load Hot-Dip Galvanized, Pre-Galvanized, Anodized, Coated With Anti-Corrosion Paint, Passivated ...



Choose from our selection of ladder cable trays, including cable and hose trays, heavy duty open cable and hose carriers, and more. Same and Next Day Delivery.



Two hot dip galvanized steel C-Channel profile side rails with transverse ladder rungs; provides the most rigid ladder tray system. Ideal for high vibration environments.



Engineered with lightweight materials for easy handling, this Ladder Cable Tray features superior heat dissipation and protective U-shaped edges to safeguard cables. Its precision CNC manufacturing ...



This unique clamp allows wire mesh cable tray to be attached to the side rails of any ladder tray and a pre-installed setscrew secures the junction for a permanent installation.



Refers to the approximate height of a cable tray used for specifying. Selecting a specific height will show cable trays with that height, as well as cable tray accessories compatible with that height.



We Jiangsu Holdee electric Co., Ltd can provide customers with cable trunking/solid through cable tray, ladder type cable tray, ventilated cable tray/perforated trough cable tray and wire mesh cable tray.

Contact Us

For more information, pricing, or custom network solutions, please contact us:

Website: <https://www.hashherbcafe.co.za>

Email: hello@hashherbcafe.co.za

Phone: +27 63 814 7295

Address: 15 Galaxy Road, Linbro Business Park, Johannesburg, 2065, South Africa

This document is for informational purposes only. Specifications subject to change without notice.

