

## Troubleshooting measures for fiber optic cable damage



## Troubleshooting measures for fiber optic cable damage



Solve common fiber optic network problems—attenuation, damage, connector issues. Learn troubleshooting steps, tools, and prevention to ensure reliable connectivity.



Learn how to identify and fix common issues in fiber optic cables, including using tools like OTDRs and VFLs, and best practices for maintenance and repair.



Troubleshooting is essentially a problem-solving method, often used in diagnostic processes to identify, analyse, and resolve issues in a system, whether it be in technology, business processes, or ...



Use troubleshooters to diagnose and repair problems on your PC Windows 11, like previous versions of Windows, comes with several built-in troubleshooters that can help identify and ...



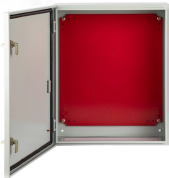
Learn how to run Windows Update Troubleshooter to resolve errors downloading or installing Windows updates.



Troubleshooters can find and fix many common problems for you. This tutorial will show you how to run troubleshooters to find and fix many common problems in Windows 10. 1 Open the ...



This guide lists the actual, field-proven problems technicians encounter most often and gives step-by-step troubleshooting actions you can copy into your ...



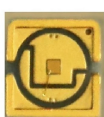
Diagnosing and troubleshooting fiber optic cables ensures reliable performance and minimizes costly downtime. By understanding common damage causes, performing proper inspections, and using ...



Understanding how to effectively pinpoint and rectify these problems is crucial for maintaining network integrity and performance. This comprehensive guide will equip you with the ...



Troubleshoot fiber optic issues like a pro with our expert guide. Resolve common problems and ensure seamless connectivity.



Troubleshooting is a critical skill for IT professionals. There's no getting around it—a vast amount of our time is spent figuring out why something that should work, doesn't. A great deal of our ...



In this paper we discuss some of the things which can cause issues on fiber networks, and some of the tools that can be used for troubleshooting. A big factor to be aware of when searching for the cause ...



On Windows 11, "Troubleshoot" is a feature that uses diagnostic data to detect and fix common problems automatically. It can restore critical service settings, make system changes on ...



Troubleshooting is a form of problem solving, often applied to repair failed products or processes on a machine or a system. It is a logical, systematic search for the source of a problem in order to solve it ...



Windows 11/10 offers some new settings in the Settings app. This Settings app comes with a new option called Troubleshoot, which has some one-click solutions to fix various problems ...



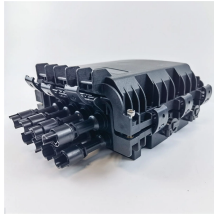
When it comes to troubleshooting, optical fault finders fill the gap between a VFL and an OTDR. Optical fault finders such as Fluke Networks' Fiber QuickMap quickly and efficiently measure length and ...



The table below presents the primary faults of fiber optic cables. By employing an enumerative method based on the collected fault information, the fault can be comprehensively determined.



What is troubleshooting and why is it important?  
Troubleshooting is a systematic approach to problem-solving often used for finding, diagnosing and correcting issues with complex ...



We'll walk you through seven practical troubleshooting steps, highlight real-world examples, and show how automated clean-up tools can help your devices run like new.



This guide lists the actual, field-proven problems technicians encounter most often and gives step-by-step troubleshooting actions you can copy into your maintenance routine.



Learn how to detect and repair damaged fiber optic cables. Visual checks, OTDR testing, IEC compliance, and waterproof maintenance tips for reliability.

## Contact Us

For more information, pricing, or custom network solutions, please contact us:

Website: <https://www.hashherbcafe.co.za>

Email: [hello@hashherbcafe.co.za](mailto:hello@hashherbcafe.co.za)

Phone: +27 63 814 7295

Address: 15 Galaxy Road, Linbro Business Park, Johannesburg, 2065, South Africa

This document is for informational purposes only. Specifications subject to change without notice.

