

Transformer wiring control cabinet price



Transformer wiring control cabinet price



What is a transformer? A transformer is a device that transfers electric energy from one alternating-current circuit to one or more other circuits, either increasing (stepping up) or reducing ...



Each transformer control cabinet is customized to meet the needs of the user. Consistent components, layout, and wiring in each cabinet across all brands of transformers make the maintenance crew's job ...



Shop Our Inventory Of Transformer Enclosures Online. Graybar Is Your Trusted Distributor For Transformers And Accessories.



Milbank U1856-O-NE 12in-48in-48in Painted Steel Double Front Lift Off Hinged Cover 3 Point Latch Current Transformer Rack Installed With Lugs-5 Per Landing Manufacturer: Milbank Mfg. Co



Transformers are electrical devices consisting of two or more coils of wire used to transfer electrical energy by means of a changing magnetic field.



A transformer is an electrical device that transfers energy between circuits using electromagnetic induction. By stepping the voltage up or down, it enables efficient transmission across long distances ...



In electrical engineering, a transformer is a passive component that transfers electrical energy from one electrical circuit to another circuit, or multiple circuits.



Get the best deals for Current Transformer Cabinet at eBay . We have a great online selection at the lowest prices with Fast & Free shipping on many items!



A transformer is defined as a passive electrical device that transfers electrical energy from one circuit to another through the process of electromagnetic induction.



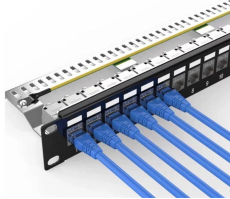
A transformer is an electrical device that transfers energy from one electric circuit to another using the process of electromagnetic induction.



A transformer is a static electrical device that transfers energy between circuits using electromagnetic induction. It changes AC voltage levels (step-up or step-down) while maintaining the ...



Explore current transformer cabinets and terminal enclosures at RSP Supply. Available in multiple sizes, latch styles, and door options for indoor and outdoor use.



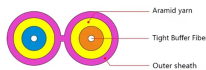
Milwaukee® 49-56-8000 Hole Saw Arbor Pilot Drill Bit, 1/4 Inch Diameter Hole Saw, 1/4 Inch Cutting Depth, 4 Inch Length



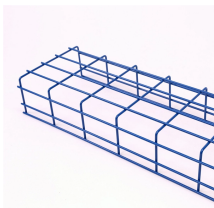
ea Add to Cart Compare Delta Metals, Inc. 8CT-3L 400/800 Amp 3-Phase Stainless Steel Current Transformer Cabinet Manufacturer: Delta Metal Products Co. Catalog #: 8CT-3L Cooper Electric Part ...



What is a Transformer? In the simplest of terms, a transformer is an electrical device that takes a given input voltage and changes it to a different output voltage. This change can either be an increase or a ...



A transformer is an electrical device designed to transfer electrical energy from one circuit to another at the same frequency. It is also referred to as a static machine since it does not have any ...



A power transformer is a static device that transfers electrical energy from one circuit to another without changing the frequency. It works on the principle of electromagnetic induction and ...



Spec sheets for utility-approved cabinets available upon request. For Product Specs and Catalog Numbers see Download Attachments. All CT cabinets are "bussed / lugged" with CT mounting rack ...



Cabinets are ETL listed and labeled as per UL 414. Cabinets meet all Nema and NEC code standards. We are a premier manufacturer of standard and custom electrical distribution equipment products.

Contact Us

For more information, pricing, or custom network solutions, please contact us:

Website: <https://www.hashherbcafe.co.za>

Email: hello@hashherbcafe.co.za

Phone: +27 63 814 7295

Address: 15 Galaxy Road, Linbro Business Park, Johannesburg, 2065, South Africa

This document is for informational purposes only. Specifications subject to change without notice.

